

AVAILABLE



HOUSE - TERRACED (EPC RATING: E)

LOGAN ROAD, WEMBLEY, HA9 8PX

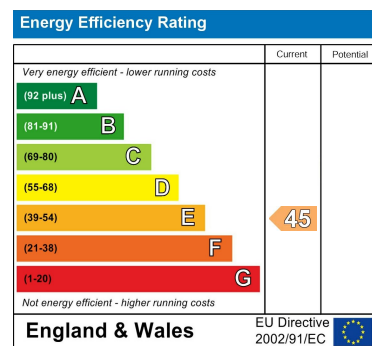
PER MONTH

£4,500 PER MONTH

Council Tax Band

E

Energy Performance Graph



Call us on

02078460308

info@stonebanks.co.uk

www.stonebanks.co.uk

Agents Note: Whilst every care has been taken to prepare these particulars, they are for guidance purposes only. All measurements are approximate and are for general guidance purposes only and whilst every care has been taken to ensure their accuracy, they should not be relied upon and potential buyers are advised to recheck the measurements.



# 5 Bedroom House - Terraced located in Wembley

This well-presented five-bedroom furnished home is located in the popular Wembley and Preston Road area, offering spacious and practical accommodation ideal for families or professional sharers.

The property comprises five double bedrooms, two reception rooms, and three modern bathrooms, along with a contemporary fitted kitchen. Recently redecorated with new carpets throughout, it is ready for immediate occupation.

Additional benefits include a private rear garden and off-street parking. Conveniently situated close to local amenities, schools, and Preston Road Underground Station, the property offers excellent connectivity.

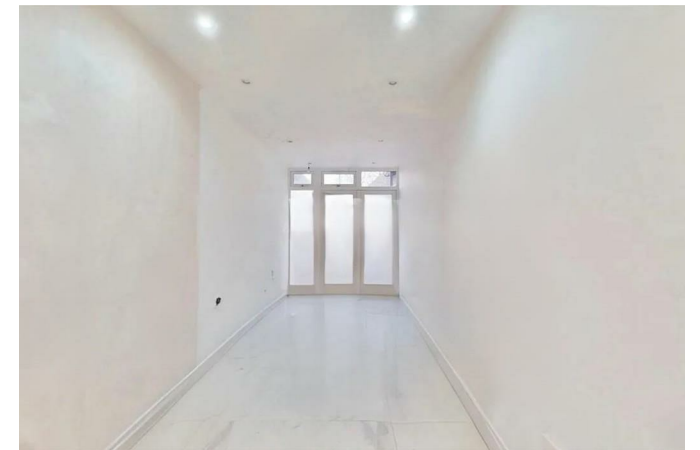
## Key Features:

Substantial five-bedroom home with well-proportioned accommodation

Five spacious double bedrooms, ideal for larger households

Two bright and versatile reception rooms

Three modern bathrooms across multiple floors



Stonebanks | 22a Northfield Avenue, Ealing, London, W13 9RL

Stonebanks | 22a Northfield Avenue, Ealing, London, W13 9RL