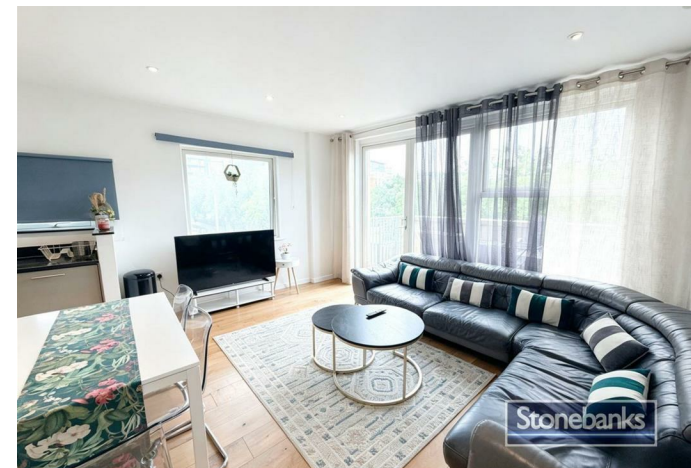


AVAILABLE



Stonebanks



Stonebanks



Stonebanks

APARTMENT (EPC RATING: C)

GRAHAME PARK WAY, LONDON, NW9 5ZT

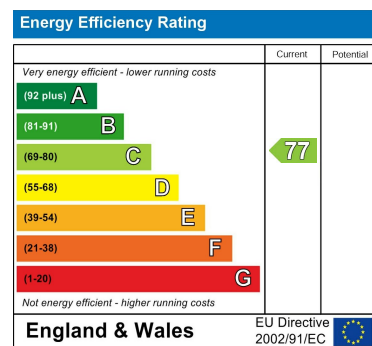
PER MONTH

£2,250 PER MONTH

Council Tax Band

D

Energy Performance Graph



Call us on

02078460308

info@stonebanks.co.uk

www.stonebanks.co.uk

Agents Note: Whilst every care has been taken to prepare these particulars, they are for guidance purposes only. All measurements are approximate and are for general guidance purposes only and whilst every care has been taken to ensure their accuracy, they should not be relied upon and potential buyers are advised to recheck the measurements.



2 Bedroom Apartment located in London

A well-presented ground floor apartment situated within the popular Pegasus Court development on Grahame Park Way. This modern property offers comfortable and convenient living accommodation, benefiting from excellent transport links, local amenities, shopping facilities, and green open spaces nearby.

The apartment is ideally suited to professionals, couples, or small families seeking a well-connected home in North West London. The property enjoys easy access to local bus routes, nearby stations, schools, supermarkets, and leisure facilities.

Property Features:

- Ground floor apartment
- Modern development
- Bright and spacious living accommodation
- Convenient location
- Close to local amenities and transport links

