

63 Allendale Close, London, SE5 8SG
Asking price £417,500
Council Tax Band: C



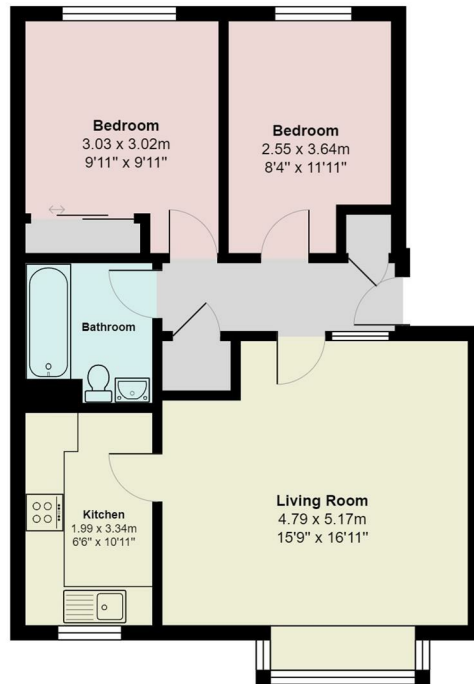
Hindwoods are delighted to present this newly refurbished, spacious two-bedroom flat located on the second floor of a purpose-built building in the desirable area of Camberwell, London. Spanning an impressive 635 square feet, this property offers a comfortable and modern living space, perfect for individuals or small families.

The flat features a well-proportioned reception room, ideal for relaxation or entertaining guests. The two bedrooms provide ample space for rest and privacy, while the bathroom is conveniently situated to serve both bedrooms and guests alike. The property has been thoughtfully updated, ensuring a fresh and inviting atmosphere throughout.

Situated in a vibrant neighbourhood, residents will benefit from being within walking distance of a variety of shops, restaurants, and local amenities. Denmark Hill Station is also nearby, providing excellent transport links to central London and beyond, making this location perfect for commuters.

Additionally, the property includes a garage en bloc, offering secure parking and extra storage space, a rare find in London. This flat is an excellent opportunity for those seeking a modern home in a lively area, combining convenience with comfort. Do not miss the chance to make this delightful property your own.

Allendale Close



Total Area: 59.2 m² ... 638 ft²

All measurements are approximate and for display purposes only



9 Dreadnought Walk
Greenwich
London
SE10 9FP
020 8858 3377

resipropertymanagers@hindwoods.co.uk
<https://www.hindwoods.co.uk>

Energy Efficiency Rating		Current	Potential
Very energy efficient - lower running costs			
(92 plus) A			
(81-91) B			
(69-80) C		80	
(55-68) D			
(39-54) E			
(21-38) F			
(1-20) G			
Not energy efficient - higher running costs			
England & Wales		EU Directive 2002/91/EC	