

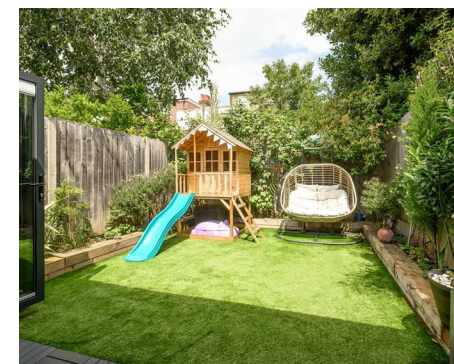


Dudley Road  
TW9 2EH

House - End Terrace

Freehold

£1,215,000



[hello@teddyproperty.com](mailto:hello@teddyproperty.com)

[www.teddyproperty.com](http://www.teddyproperty.com)

02046 384065



## 16 Dudley Road Richmond | | TW9 2EH

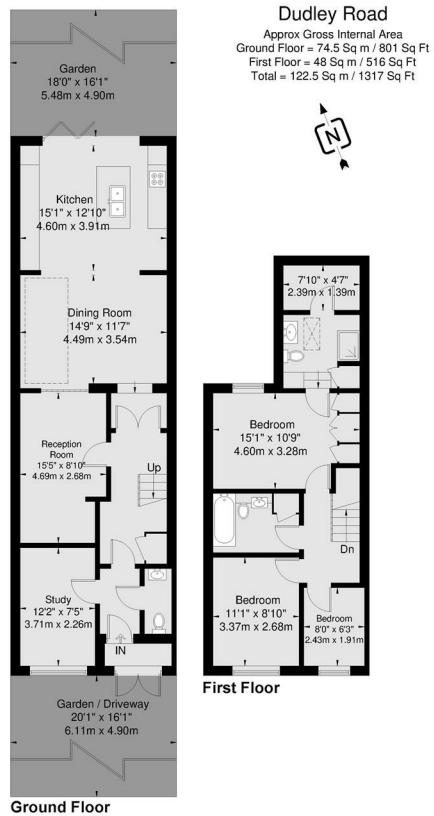


Situated on a quiet residential road in the heart of Kew, this beautifully presented three-bedroom end-of-terrace family home offers over 1,320 sq ft of stylish and thoughtfully designed accommodation, combining contemporary interiors with excellent family living.

# 16 Dudley Road

£1,215,000 Freehold

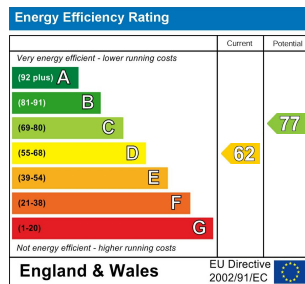




Viewmedia @ 2026  
 Viewmedia.co.uk  
 Whilst every attempt has been made to ensure the accuracy of this floor plan, measurements of doors, windows and rooms are approximate and no responsibility is taken for any error or omission. This illustration is for identification purpose only. Not drawn to scale, unless stated. Dimensions shown are to the nearest 5" and are to the points indicated by the arrow heads.

**EPC Rating: D**  
**Council Tax Band: F**  
**Local Authority:**

Agents Note: Whilst every care has been taken to prepare these particulars, they are for guidance purposes only. All measurements are approximate and are for general guidance purposes only and whilst every care has been taken to ensure their accuracy, they should not be relied upon and potential buyers/tenants are advised to recheck the measurements.



Prime Property Expert | Teddy Property  
 25 Years' Experience in South West  
 London & Surrey

02046 384065

hello@teddyproperty.com

www.teddyproperty.com