



Lebanon Park Mansions,
Richmond Road, Twickenham,
TW1

£2,700 p/m



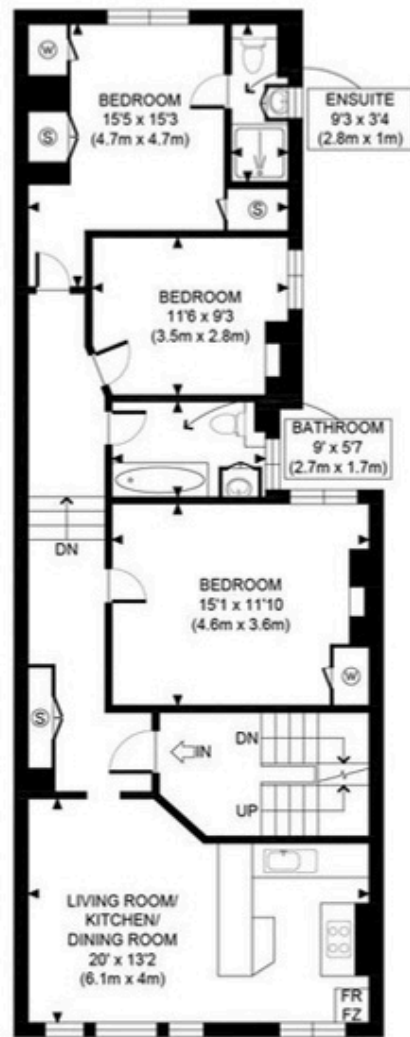
PROPERTY
PERFECTLY PRESENTED





- Spacious three-bedroom apartment
- Two contemporary bathrooms refurbished
- Sought-after location
- Moments from Marble Hill Park and the River Thames
- Close to St Margarets Station and local schools
- Flexible furnishing options and available 27 July 2026

A beautifully presented three-bedroom, two-bathroom apartment in the heart of St Margarets, ideally located close to Marble Hill Park, the River Thames and St Margarets Station. Offering spacious accommodation, modern refurbished bathrooms, this superb home is available from 27 July 2026 and is ideal for long-term tenants seeking a prime South West London location.



FIRST FLOOR
GROSS INTERNAL
FLOOR AREA 1031 SQ FT



<p>APPROX. GROSS INTERNAL FLOOR AREA 1031 SQ FT / 96 SQM</p> <p><small>Disclaimer: Floor plan measurements are approximate and are for illustrative purposes only. While we do not doubt the floor plan accuracy and completeness, you or your advisors should conduct a careful, independent investigation of the property in respect of monetary valuation</small></p>	<p>Lebanon Park Mansions</p> <p>date 22/04/26</p> <p>photoplan </p>
---------------------------------------------------------------------------------------------------------------------------------------------------------------------------------------------------------------------------------------------------------------------------------------------------------------------------------------------------------------------------------	----------------------------------------------------------------------------



PROPERTY
PERFECTLY PRESENTED

T : 020 8103 3771

E: erika@teddyproperty.com

W: teddyproperty.com

Buying • Selling • Letting