



PROPERTY
PERFECTLY PRESENTED

1 Bedrooms

House

Per month

£1,800 Per
"

Located in

Richmond





35A Chilton Road

Richmond | | TW9 4JD



Newly refurbished ground floor Edwardian apartment with its own private entrance and beautifully maintained private south facing garden - available now unfurnished.

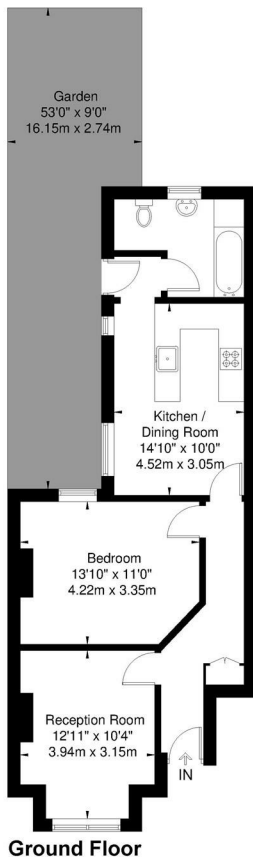
35A Chilton Road

£1,800 Per month



- Edwardian ground floor maisonette
- one bedroom
- Excellent local amenities
- District line underground
- Private south facing garden
- Spacious eat-in kitchen
- Short walk to Kew Village
- Unfurnished

Chilton Road
 Approx Gross Internal Area
 Ground Floor = 55 Sq m / 592 Sq Ft



Viewmedia @ 2025
 Viewmedia.co.uk

Whilst every attempt has been made to ensure the accuracy of this floor plan, measurements of doors, windows and rooms are approximate and no responsibility is taken for any error or omission. This illustration is for identification purpose only. Not drawn to scale, unless stated. Dimensions shown are to the nearest 3" and are to the points indicated by the arrow heads.

EPC Rating: D
Council Tax Band D
Local Authority

Agents Note: Whilst every care has been taken to prepare these particulars, they are for guidance purposes only. All measurements are approximate and are for general guidance purposes only and whilst every care has been taken to ensure their accuracy, they should not be relied upon and potential buyers/tenants are advised to recheck the measurements.

Energy Efficiency Rating		Current	Potential
Very energy efficient - lower running costs			
(92 plus) A			
(81-91) B			
(69-80) C			77
(55-68) D		66	
(39-54) E			
(21-38) F			
(1-20) G			
Not energy efficient - higher running costs			
England & Wales		EU Directive 2002/91/EC	

Leyborne Park
 Kew
 TW9 3HB



jo@teddyproperty.com

02046 384065

30