



LEBANON PARK MANSIONS, RICHMOND ROAD,
TWICKENHAM, TW1 3BH

RICHMOND ROAD

TWICKENHAM • TW1 3BH

A beautifully presented three-bedroom, two-bathroom apartment enjoys a prime position in the heart of St Margarets, just moments from the open spaces of Marble Hill Park, the River Thames and St Margarets Station.

Offering bright, spacious and well-balanced accommodation throughout, this attractive home is perfectly positioned to enjoy the very best of village living. Residents will benefit from easy access to a selection of highly regarded schools, picturesque riverside walks, the open green spaces of Marble Hill Park, and the excellent array of independent shops, cafés and restaurants that make St Margarets such a desirable place to live.

The accommodation comprises a generous reception room, a well-appointed kitchen, three well-proportioned bedrooms and two stylish bathrooms. Both bathrooms have been recently refurbished to an excellent standard, providing a contemporary finish that complements the apartment's bright and welcoming interior.

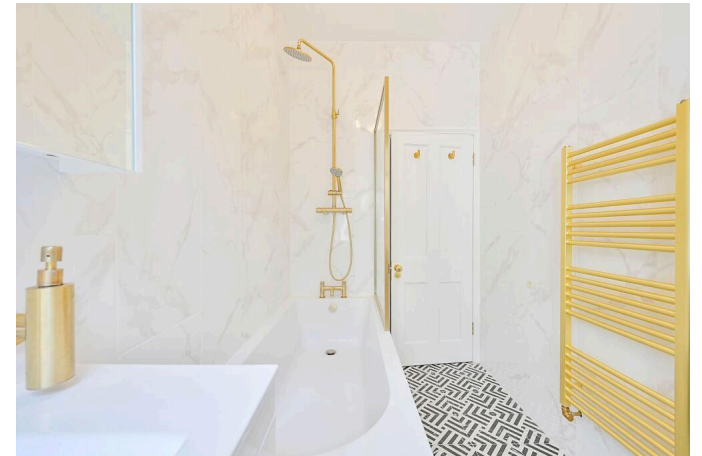
Available from 27 July 2026, this property would make an exceptional long-term home for professional tenants, families or those seeking generous living space in one of South West London's most desirable locations.

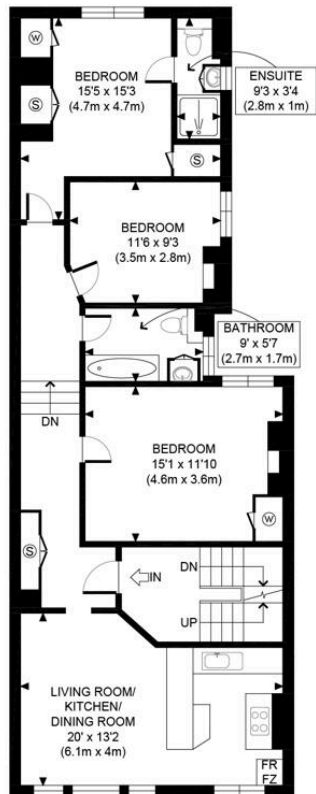
EPC = D





Location





FIRST FLOOR
GROSS INTERNAL
FLOOR AREA 1031 SQ FT

<p>APPROX. GROSS INTERNAL FLOOR AREA 1031 SQ FT / 96 SQM</p> <p>Disclaimer: Floor plan measurements are approximate and are for illustrative purposes only. While we do not doubt the floor plan accuracy and completeness, you or your advisors should conduct a careful, independent investigation of the property in respect of monetary valuation</p>	<p>Lebanon Park Mansions</p>
	<p>date 22/04/26</p> <p>photoplan</p>



Teddy Property
 T 020 8103 3771
 E erika@teddyproperty.com
 teddyproperty.com

IMPORTANT:

Teddy Property would inform prospective purchasers that these sales particulars have been prepared as a general guide only. A detailed survey has not been carried out, nor the services, appliances or fittings tested. Room sizes should not be relied upon for furnishing purposes and are approximate. If floor plans are included, they are for guidance only and illustration purposes only and may not be to scale. If there are any important matters likely to affect your decision to buy, please contact us before viewing the property.