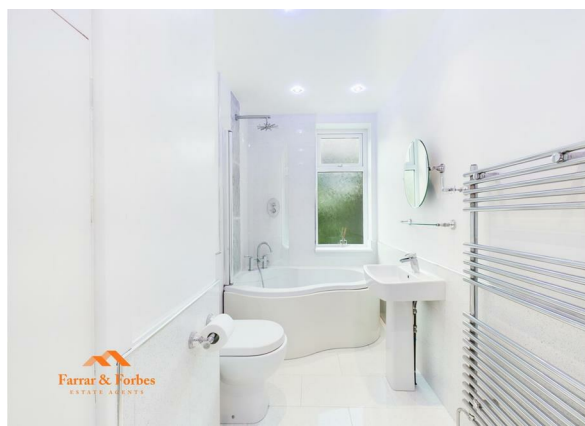
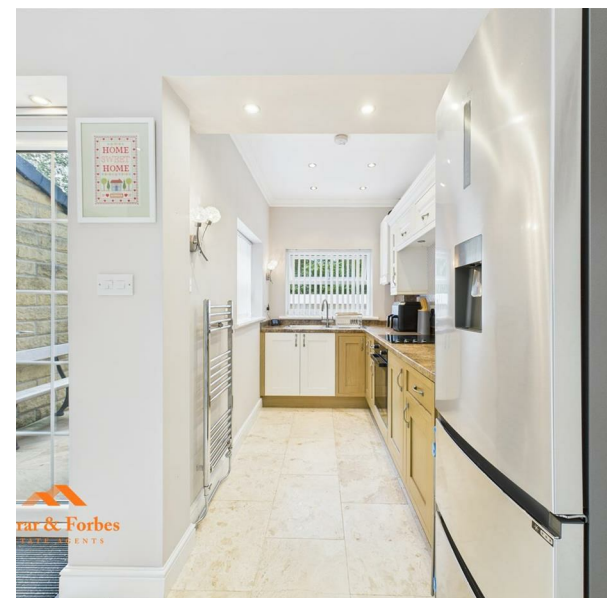


28 Essex Street, Colne, BB8 0HB
Offers over £130,000
Council Tax Band:



Nestled at the end of a quiet street, this beautifully modernised mid-terrace home offers both comfort and convenience. Located just a short distance from local parks, Colne town centre, and the highly regarded West Street Primary School, this property is perfectly positioned for family life.

As you enter the home, you are welcomed into a spacious open-plan living, dining, and kitchen area — designed to flow seamlessly, making it ideal for entertaining or enjoying quality family time. The entire ground floor is finished with stylish Karndean flooring, while the kitchen features an L-shaped layout with matching oak-effect wall, base, and drawer units. An integrated electric oven & hob.

The dining area boasts a gas fire with a stone hearth, creating a cosy and inviting focal point. Meanwhile, the living room is warmed by an open gas fire, adding charm and warmth to the space. A mix of pendant and spotlight lighting throughout the home adds a contemporary touch.

Upstairs, the main bedroom is a generous double with a built-in storage cupboard, while the second bedroom is a spacious single with tranquil woodland views to the rear. The family bathroom features a sleek, fully tiled white three-piece suite, including a low-level WC, pedestal hand basin, and a P-shaped bath with overhead shower. Spotlights and mood lighting enhance the clean and modern aesthetic.

The attic room is a large, versatile room stretching the length of the house, complete with eaves storage and built-in drawers — or alternatively ideal for a home office, playroom or a guest room.

Externally, the rear has been fully paved, with steps leading down to a utility room equipped with electricity and plumbing for a washing machine.





Farrar & Forbes

ESTATE AGENTS

Source | Sell | Rent | Manage

11a Skelton Street
Colne
Lancashire
BB8 9JE
01282 914042
Info@farrarandforbes.co.uk

