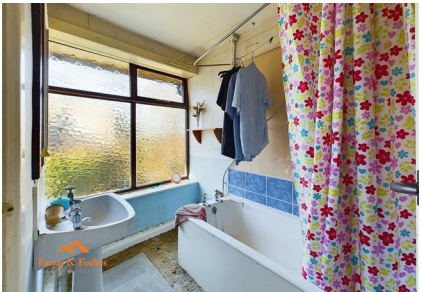
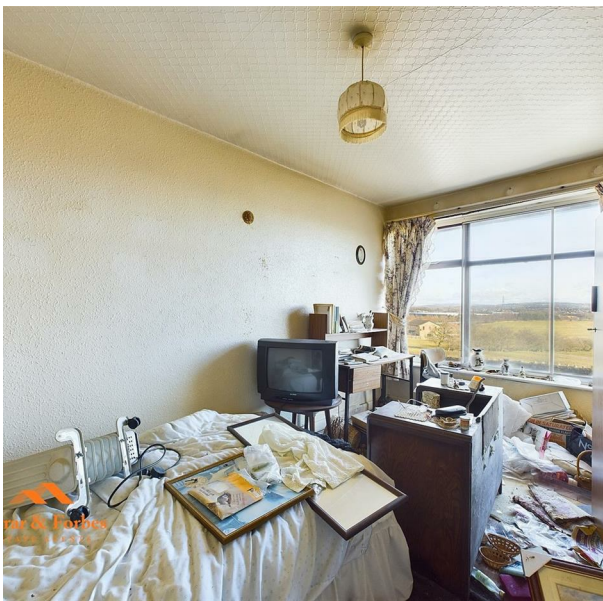


135 Manchester Road, Hapton, Burnley, BB11 5RF
Auction Guide £130,000
Council Tax Band:



DIAMOND IN THE ROUGH!

Cash Buyers Only

This four-bedroom semi-detached property offers some of the most breathtaking views you can find from a home. While it requires significant renovation, the potential here is truly incredible. This project is not for the faint-hearted, but for those looking to create a dream home, this is an opportunity like no other.

Due to the structural work required, this property is available to cash buyers only.

As you approach, you'll find a driveway and a single garage alongside a storm porch entrance. Inside, the home features a spacious lounge that extends into a dining room at the rear, complete with sliding doors leading to the garden. The kitchen runs along the back of the garage and includes a utility space, presenting the perfect opportunity to open up the layout and create a stunning open-plan kitchen diner with uninterrupted views of the hills.

Upstairs, the property offers four bedrooms—three doubles and one single—as well as a separate WC, wash basin, and a bathroom with an additional sink. Three of the bedrooms have an amazing view to the front to wake up to every morning.

To the rear, the generous garden provides ample space for further extensions, making this home a fantastic investment for those ready to transform it into something truly special.



11a Skelton Street
Colne
Lancashire
BB8 9JE
01282 914042
Burnley@farrarandforbes.co.uk