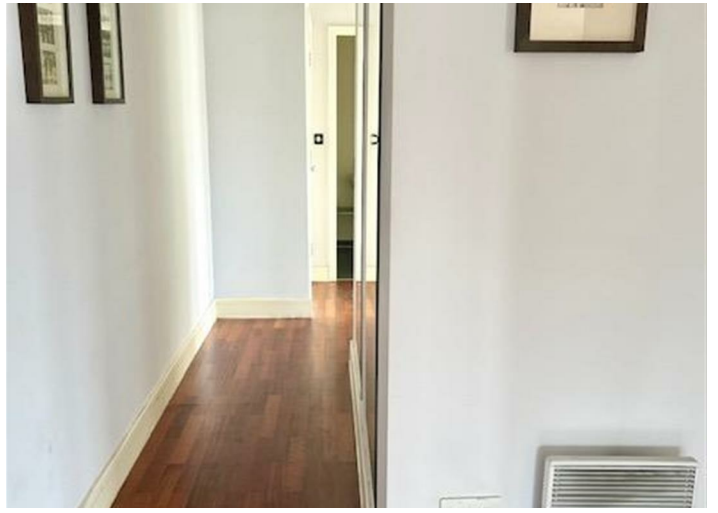


St. Marys Road
London
W5 5PR





The Curve 27-31 St. Marys Road

Huntmore Homes are pleased to present this stunning two bedroom, two bathroom apartment located in a desirable modern block in the heart of Ealing.

Set on the first floor and spread across approximately 931 sq ft, the property offers a bright and spacious open-plan kitchen and living room, along with two well-proportioned bedrooms. The master bedroom features an en-suite bathroom, while the second bedroom is ideal for guests or home office.

The property also benefits from an allocated underground parking space. Moments from Ealing Broadway and South Ealing, it offers a vibrant cafe culture and a great selection of boutique shops, bars, and eateries along with tube stations that are within walking distance.

Local Authority

Ealing

Council Tax Band

F

Energy Efficiency Rating		Current	Potential
Very energy efficient - lower running costs			
(92 plus) A			
(81-91) B			
(69-80) C		76	83
(55-68) D			
(39-54) E			
(21-38) F			
(1-20) G			
Not energy efficient - higher running costs			
England & Wales		EU Directive 2002/91/EC	



Agents Note: Whilst every care has been taken to prepare these particulars, they are for guidance purposes only. All measurements are approximate and are for general guidance purposes only and whilst every care has been taken to ensure their accuracy, they should not be relied upon and potential buyers/tenants are advised to recheck the measurements



Ealing

38 St Mary's Road

Ealing

W5 5EU



Contact

020 8567 2648

ealing@huntmorehomes.com

www.huntmorehomes.com

HUNTMORE
— HOMES —