

Rosebank Road

Hanwell

W7 2EW





43 Rosebank Road

£550,000

Huntmore Homes are proud to present one of four newly converted two bedroom luxury apartments available to the market.

This two double bedroom, two bathroom property, that is located on the first floor, has been finished to the highest standard throughout with marble tiled bathrooms and bespoke fixtures and fittings. A beautiful herringbone oak floor has been fitted in the sitting and dining area with neutral décor and double-glazing throughout. In addition there is the bonus of air conditioning for cooling in summer. There is also a chance to obtain off street parking.

Rosebank Road is ideally located for access to both Hanwell Crossrail station and Boston Manor (Piccadilly line) tube station, as well as numerous local shops, cafes and restaurants in the area.

There are numerous local schools in the area, including St. Joseph's Primary School and Elthorne Park High School, making it an ideal home for families. The Uxbridge Road provides multiple shopping facilities and bus routes into Ealing Broadway. Hanwell is a very green and scenic suburban area of Greater London, with the River Brent and the surrounding parklands making for several beautiful walks.

Local Authority

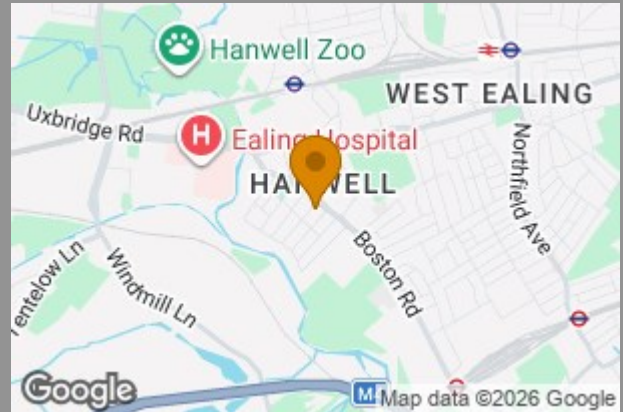
Ealing

Council Tax Band

E

Directions

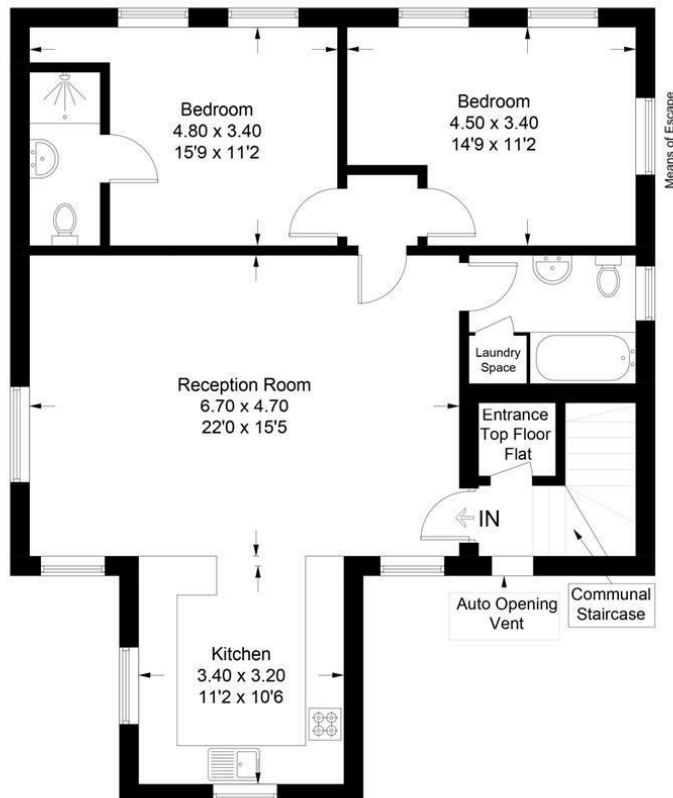
Energy Efficiency Rating		
	Current	Potential
Very energy efficient - lower running costs		
(92 plus) A		
(81-91) B		
(69-80) C	80	
(55-68) D		
(39-54) E		
(21-38) F		
(1-20) G		
Not energy efficient - higher running costs		
England & Wales		EU Directive 2002/91/EC



Agents Note: Whilst every care has been taken to prepare these particulars, they are for guidance purposes only. All measurements are approximate and are for general guidance purposes only and whilst every care has been taken to ensure their accuracy, they should not be relied upon and potential buyers/tenants are advised to recheck the measurements

First Floor Flat, Rosebank Road

Approximate Gross Internal Area = 82.0 sq m / 883 sq ft



First Floor

Illustration for identification purposes only, measurements are approximate, not to scale. floorplansUsketch.com © (ID933255)



Ealing

38 St Mary's Road

Ealing

W5 5EU



Contact

020 8567 2648

ealing@huntmorehomes.com

www.huntmorehomes.com

HUNTMORE
— HOMES —