

Fugelmere Grange
Fulmer Road
Fulmer
SL3 6HN







Fugelmere Grange Fulmer Road

£4,250,000

The main house of this remarkable property opens into an impressive ground floor entry foyer featuring a grand winding staircase and a cosy gas fireplace, creating a welcoming and elegant atmosphere. Adjacent to the foyer is a convenient guest bathroom. The ground floor also includes a spacious study or office, perfect for working from home, and a dedicated cinema room for entertainment. The mechanical room, equipped with an additional guest bathroom accessible from outside, adds to the practicality of the home.

The expansive living room, complete with a covered veranda, offers a seamless blend of indoor and outdoor living. The open-plan kitchen and dining room is designed for both functionality and style, ideal for family meals and hosting guests. Additional ground floor amenities include a utility/laundry room, a well-equipped gym, and a wine cellar.

Upstairs, the first floor features a luxurious master bedroom suite with an ensuite bathroom, built-in fitted wardrobes, and a covered balcony, providing a private retreat. A second master bedroom suite boasts an ensuite bathroom, a sitting area, a walk-in dressing room, and its own balcony. The architectural skylight feature floods the first floor with natural light, enhancing the open and airy feel. Two additional double bedrooms, each with ensuite bathrooms and walk-in dressing rooms, offer ample space and privacy. Additional storage is provided by a walk-in linens/storage closet with access to under-eaves storage and

a server/tech room.

The annex is a fully independent living space with its own separate entrance, making it ideal for guests or extended family. It includes one double bedroom, a full bath, and an open-plan kitchen, dining, and living room. This unit is fully lockable and features a separate heating system with a combi boiler.

The property also includes a fully heated, attached three-car garage with built-in storage cabinetry, ensuring plenty of space for vehicles and additional storage.



Fulmer Road, SL3

Approximate Gross Internal Area = 514.0 sq m / 5535 sq ft
 Garage = 55 sq m / 593 sq ft
 Annex = 56 sq m / 604 sq ft
 Stable & Wine Cellar = 30 sq m / 321 sq ft
 Total = 655.0 sq m / 7053 sq ft

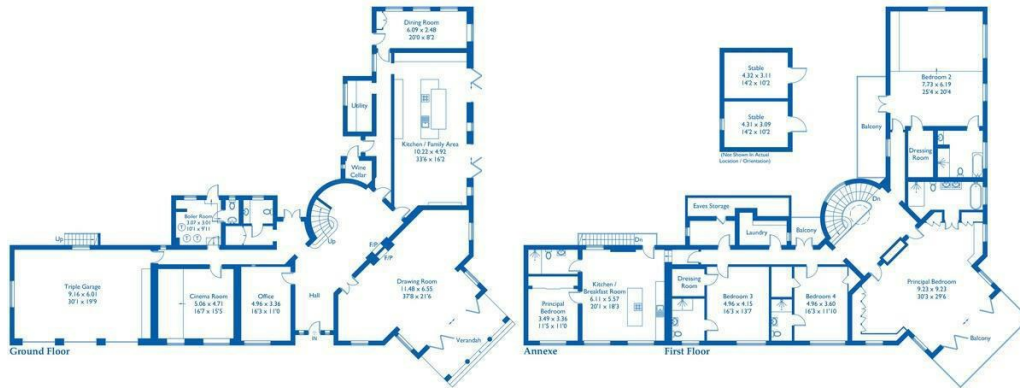


Illustration for identification purposes only, measurements are approximate, not to scale.

Local Authority
 South Buckinghamshire

Council Tax Band
 H

Directions

Energy Efficiency Rating		Current	Potential
Very energy efficient - lower running costs			
(92 plus) A			
(81-91) B			
(69-80) C			
(55-68) D			
(39-54) E			
(21-38) F			
(1-20) G			
Not energy efficient - higher running costs			
England & Wales		72	
			EU Directive 2002/91/EC



Agents Note: Whilst every care has been taken to prepare these particulars, they are for guidance purposes only. All measurements are approximate and are for general guidance purposes only and whilst every care has been taken to ensure their accuracy, they should not be relied upon and potential buyers/tenants are advised to recheck the measurements



Ealing

38 St Mary's Road

Ealing

W5 5EU



Contact

020 8567 2648

ealing@huntmorehomes.com

www.huntmorehomes.com

HUNTMORE
— HOMES —