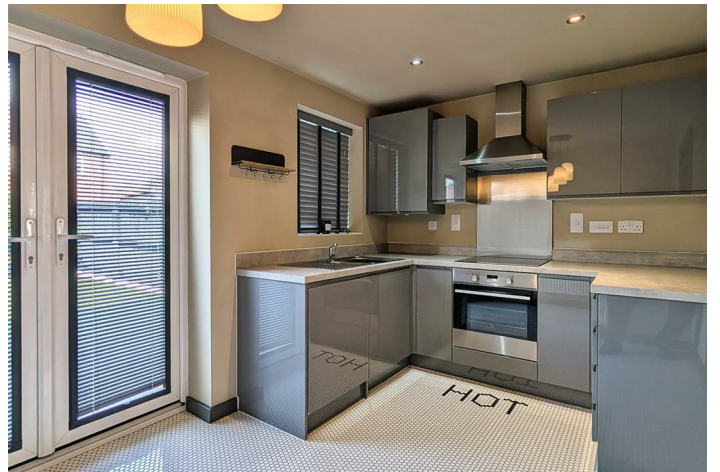




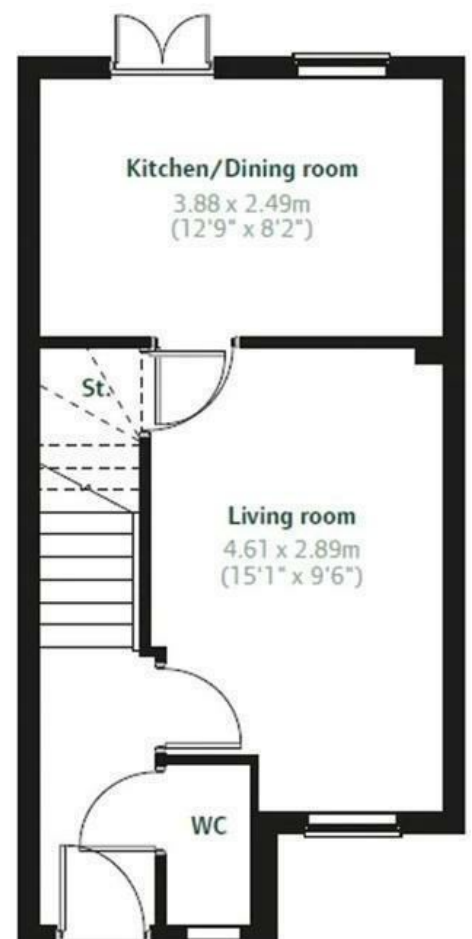
Kingfisher Road

Stoke Bardolph, Burton Joyce, Nottingham, NG14 5HP

- End Townhouse
- Modern Interiors
- Ground Floor WC
 - Driveway
- Low Maintenance Rear Garden
- Well Presented Throughout
 - Dining Kitchen
 - Two Double Bedrooms
- Close to all Local Amenities and Transport Links
- Council Tax Band B



Local Authority
Council Tax Band
EPC Rating B



Burton Joyce Office

111 Church Road, Burton Joyce,
Nottingham, NG14 5DJ

Contact

0115 855 66 22
lettings@johnsonsandpartners.co.uk
www.johnsonsandpartners.co.uk

Agents Note: Whilst every care has been taken to prepare these particulars, they are for guidance purposes only. All measurements are approximate and for general guidance purposes only and whilst every care has been taken to ensure accuracy, they should not be relied upon and potential buyers/tenants are advised to recheck the measurements.