

JOHNSONS & PARTNERS  
Estate and Letting Agency



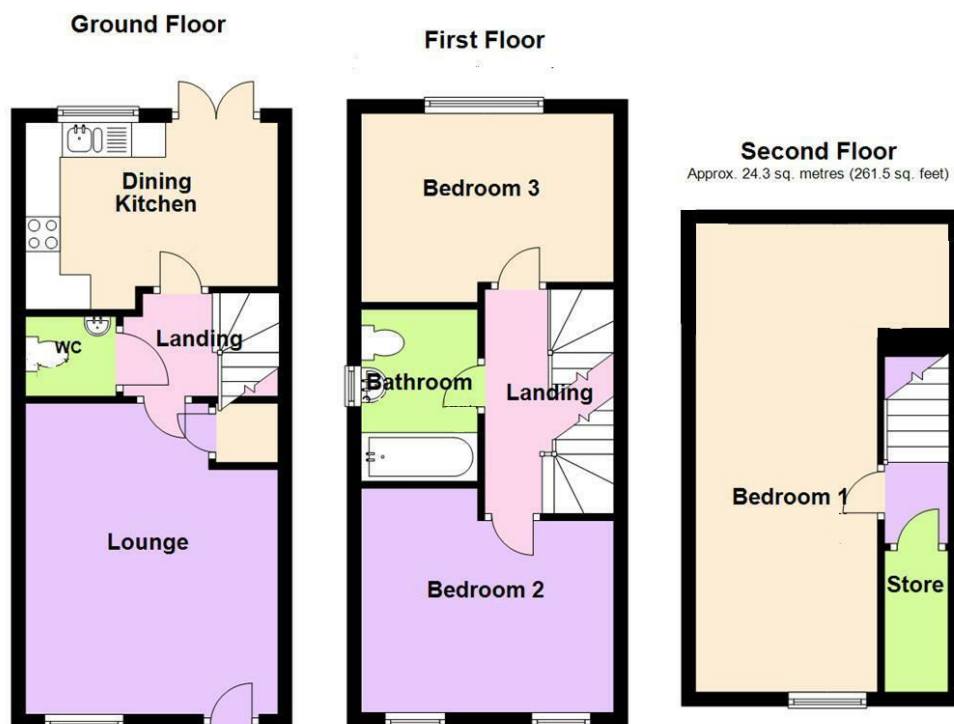
## Ruddy Road

Stoke Bardolph, Burton Joyce, NG14 5JH

- Three Bedroom Accommodation
- Lounge/Dining Kitchen & WC to Ground Floor
- Second Floor Double Bedroom
- Close To Excellent Amenities
- Council Tax - C
- Three Storey Living
- Two Bedrooms & Bathroom To First Floor
- Popular Development
- Internal Viewing Recommended
- EPC - B



Local Authority **Gedling**  
Council Tax Band **C**  
EPC Rating **B**



**Burton Joyce Office**  
111 Church Road, Burton Joyce,  
Nottingham, NG14 5DJ

**Contact**  
0115 855 66 22  
[lettings@johnsonsandpartners.co.uk](mailto:lettings@johnsonsandpartners.co.uk)  
[www.johnsonsandpartners.co.uk](http://www.johnsonsandpartners.co.uk)

Agents Note: Whilst every care has been taken to prepare these particulars, they are for guidance purposes only. All measurements are approximate and for general guidance purposes only and whilst every care has been taken to ensure accuracy, they should not be relied upon and potential buyers/tenants are advised to recheck the measurements.