

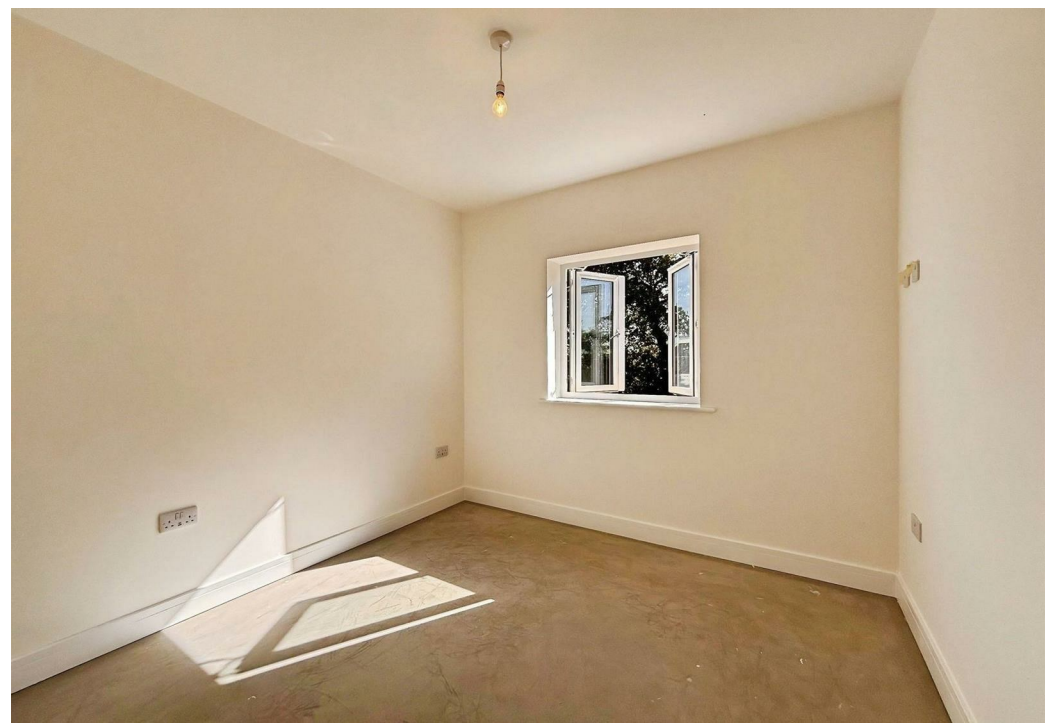
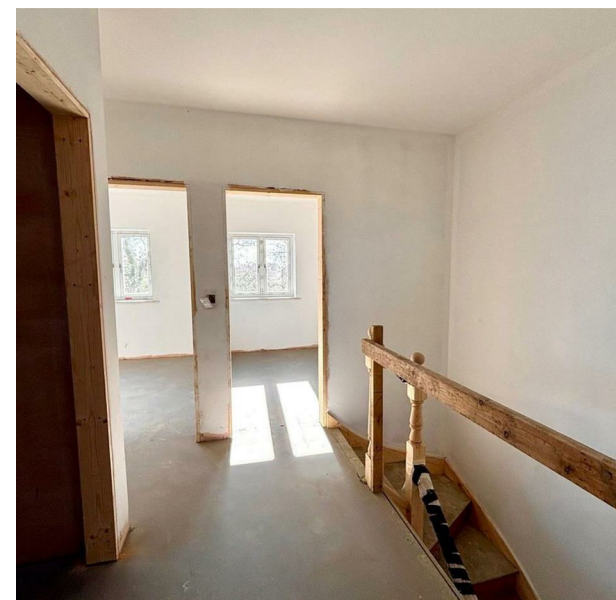
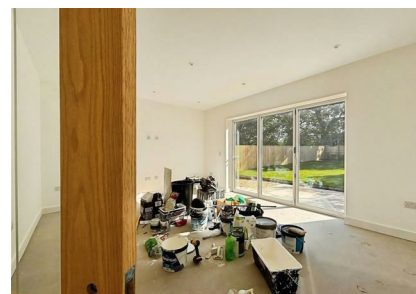
Plot 19, 6 Sunset Drive Meadow View Park, Cowes, Isle of Wight, PO31 7GE

£368,000

EPC Rating: Council Tax Band:

ELLIOTT  
LINCOLN  
ESTATE AGENTS & ASSOCIATES

*Reassuringly familiar, refreshingly new*



Classed as an Affordable Housing Unit this property is marketed at 80% of the current market value. To qualify for this purchase, you must fit the specified criteria. For further information please don't hesitate to contact us.

An exceptional three-bedroom property offering modern living combined with eco-friendly features, ensuring comfort and sustainability for its lucky residents.



ELLIOTT  
LINCOLN  
ESTATE AGENTS & ASSOCIATES

Reassuringly familiar, refreshingly new

Office 4, Baring Chambers Denmark Road  
Cowes  
Isle of Wight  
PO31 7SY  
01983 642622  
office@elliottlincoln.co.uk  
www.elliottlincoln.co.uk

Energy Efficiency Rating		
	Current	Potential
Very energy efficient - lower running costs		
(92 plus) A		
(81-91) B		
(69-80) C		
(55-68) D		
(39-54) E		
(21-38) F		
(1-20) G		
Not energy efficient - higher running costs		
England & Wales	EU Directive 2002/91/EC	