

Plot 10 Oceanview Developments, Rosewood Site, Place Road, Cowes, Isle of Wight, PO31 7UA  
Asking Price £485,000

EPC Rating: Council Tax Band:

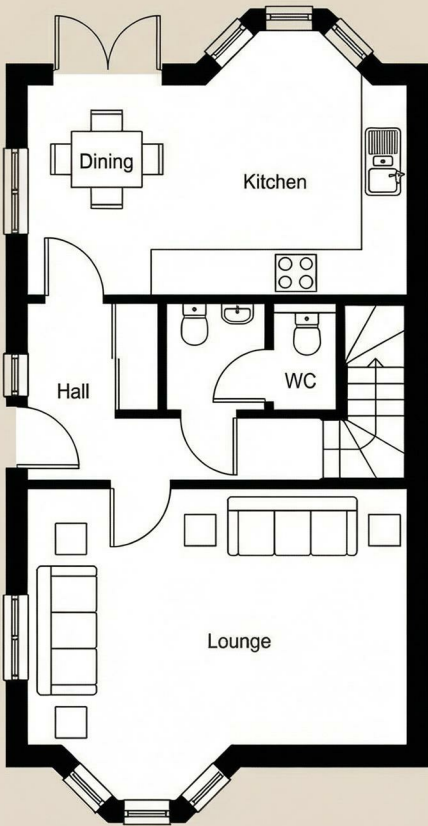


A striking new detached home in the exclusive Rosewood development, Plot 10 "The Kingfisher" offers beautifully balanced accommodation of approximately 110 sq. m, with a generous lounge, superb kitchen diner, three bedrooms, two bathrooms and a wrap-around garden, all set on the edge of Cowes in a highly convenient position for the town, mainland links and the coast.

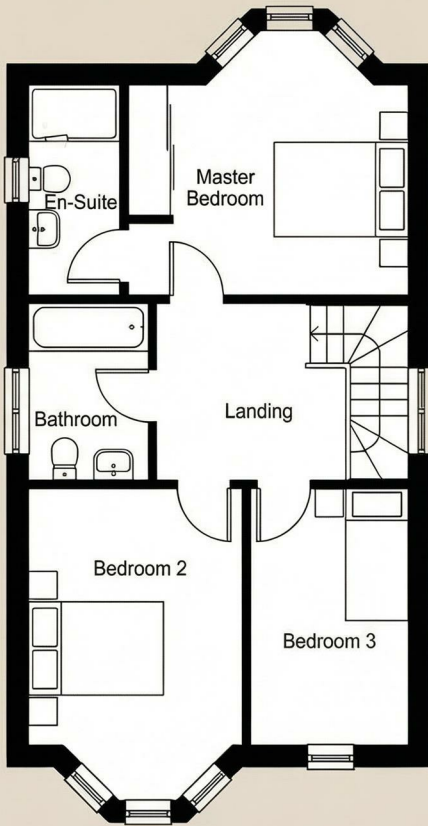
**ELLIOTT  
LINCOLN**  
ESTATE AGENTS & ASSOCIATES

*Reassuringly familiar, refreshingly new*

Call or WhatsApp: 01983 642622  
office@elliottlincoln.co.uk  
www.elliottlincoln.co.uk



Ground Floor Plan



First Floor Plan

Energy Efficiency Rating		Current	Potential
<i>Very energy efficient - lower running costs</i>			
(92 plus)	<b>A</b>		
(81-91)	<b>B</b>		
(69-80)	<b>C</b>		
(55-68)	<b>D</b>		
(39-54)	<b>E</b>		
(21-38)	<b>F</b>		
(1-20)	<b>G</b>		
<i>Not energy efficient - higher running costs</i>			
<b>England &amp; Wales</b>		EU Directive 2002/91/EC	