

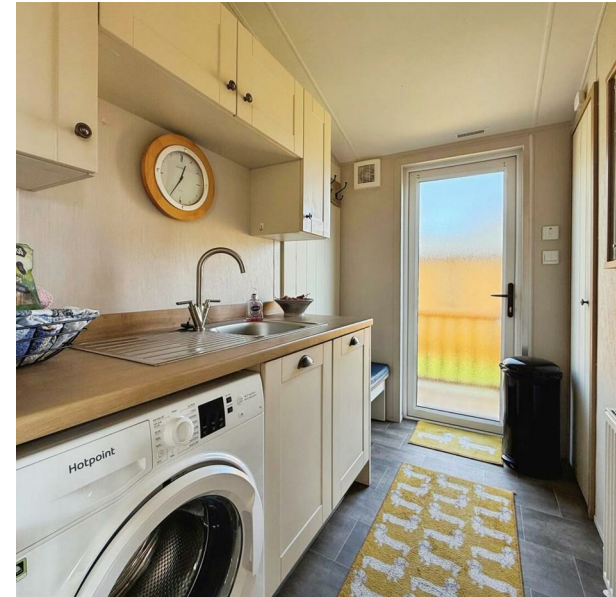
17 North, Roebeck Country Park Gatehouse Road, Ryde, PO33 4BP

£65,000

EPC Rating: Council Tax Band: Exempt

ELLIOTT  
LINCOLN  
ESTATE AGENTS & ASSOCIATES

Reassuringly familiar, refreshingly new



A fabulous rural location, stylish and beautifully positioned two-bedroom holiday home, enjoying a stunning outlook of acres of countryside from one of the higher points of the park, with wraparound decking, parking and bright, spacious accommodation throughout. Perfect for those seeking a relaxing Island retreat with 12-month holiday use in a peaceful yet well-connected setting.

Call or WhatsApp: 01983 642622  
office@elliottlincoln.co.uk  
www.elliottlincoln.co.uk

17 Roebeck Country Park, Ryde, PO33 4BS



**Floor Plan**

Floor area 98.8 sq.m. (1,064 sq.ft.)

Total floor area: 98.8 sq.m. (1,064 sq.ft.)

This floor plan is for illustrative purposes only. It is not drawn to scale. Any measurements, floor areas (including any total floor area), openings and orientations are approximate. No details are guaranteed, they cannot be relied upon for any purpose and do not form any part of any agreement. No liability is taken for any error, omission or misstatement. A party must rely upon its own inspection(s). Powered by www.Propertybox.io

Energy Efficiency Rating		Current	Potential
Very energy efficient - lower running costs			
(92 plus) <b>A</b>			
(81-91) <b>B</b>			
(69-80) <b>C</b>			
(55-68) <b>D</b>			
(39-54) <b>E</b>			
(21-38) <b>F</b>			
(1-20) <b>G</b>			
Not energy efficient - higher running costs			
<b>England &amp; Wales</b>		EU Directive 2002/91/EC	