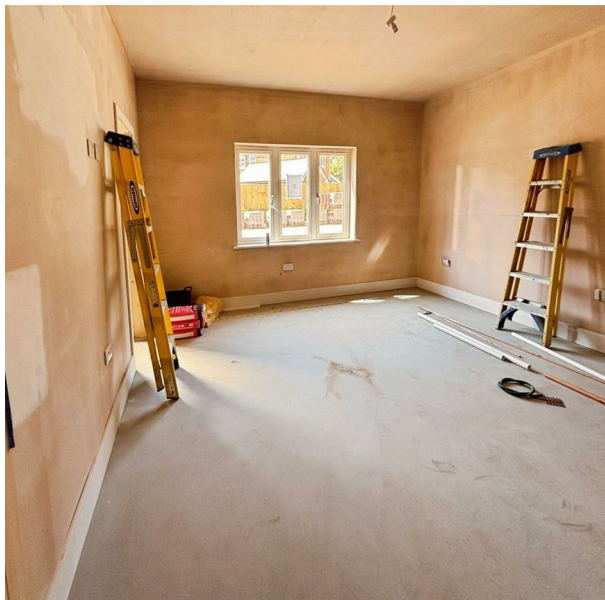
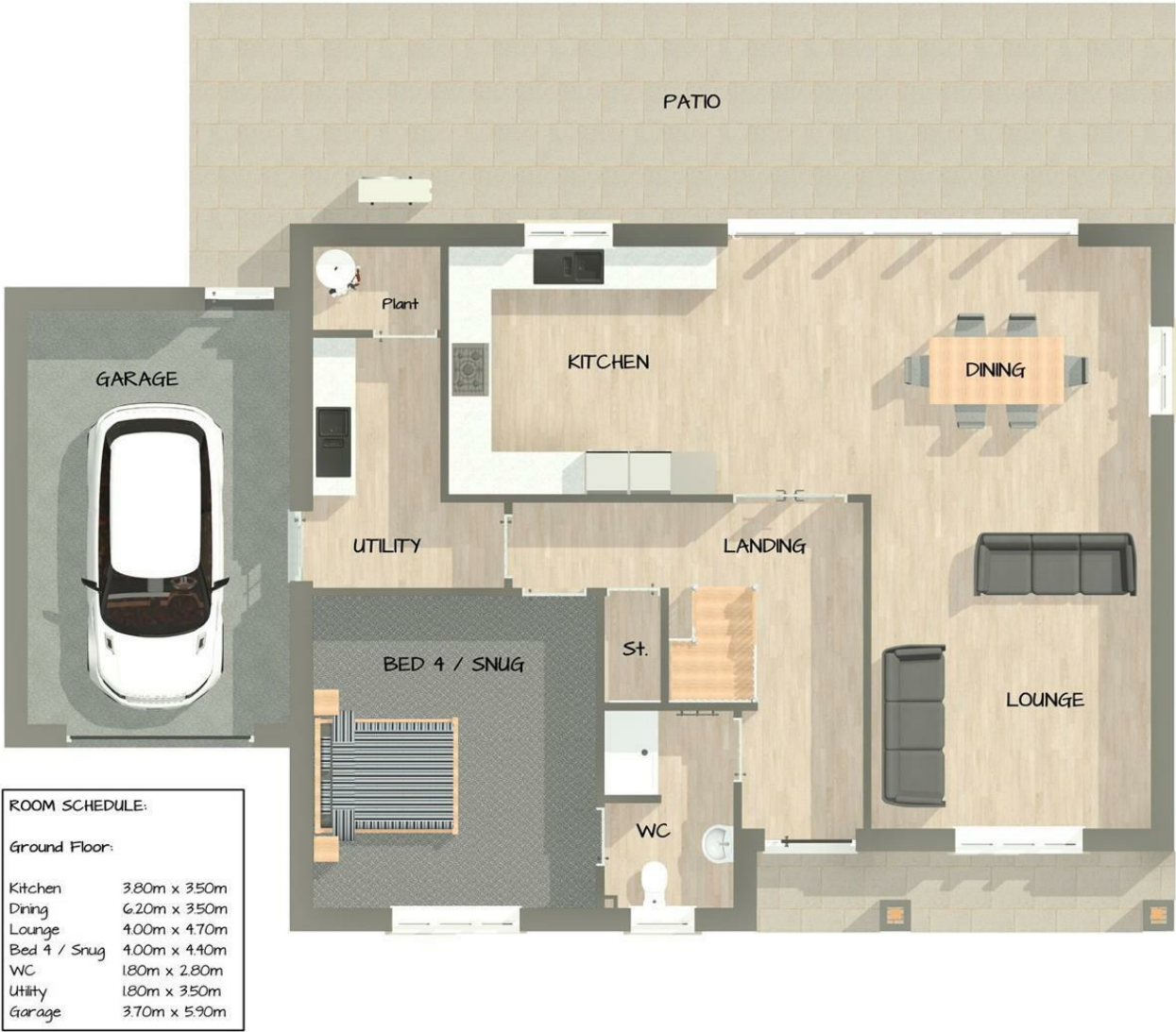


Plot 93, 17 Sunset Drive Meadow View Park, Cowes, Isle of Wight, PO31 7GE  
Asking Price £620,000  
EPC Rating:    Council Tax Band:



Classed as an Affordable Housing Unit this property is marketed at 80% of the current market value. To qualify for this purchase, you must fit the specified criteria. For further information please don't hesitate to contact us.

A stunning detached chalet-style home, Plot 93 Meadow View Park, situated in the highly sought-after development. Designed with modern living in mind, this exceptional new build offers futureproof features alongside spacious and versatile accommodation, totalling an impressive 201m<sup>2</sup> of internal space.



**ELLIOTT  
LINCOLN**  
ESTATE AGENTS & ASSOCIATES

Reassuringly familiar, refreshingly new

Office 4, Baring Chambers Denmark Road  
Cowes  
Isle of Wight  
PO31 7SY  
01983 642622  
office@elliottlincoln.co.uk  
www.elliottlincoln.co.uk

