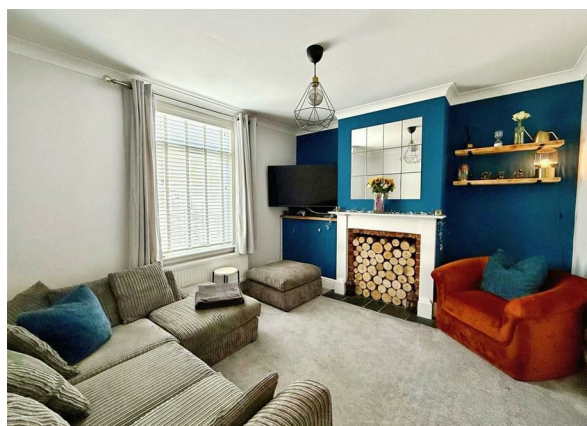


32 Somerset Road, Ryde, PO33 1BU  
Asking Price £280,000  
EPC Rating: C Council Tax Band: C

ELLIOTT  
LINCOLN  
ESTATE AGENTS & ASSOCIATES

Reassuringly familiar, refreshingly new



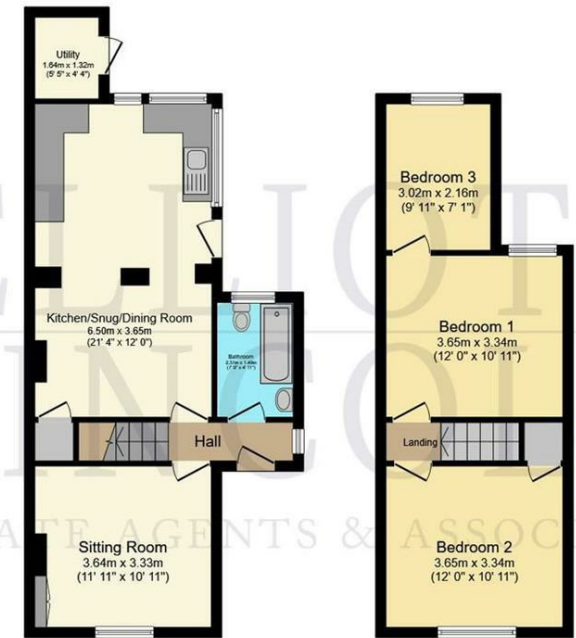


A beautifully presented three-bedroom home located in a sought-after residential area of Ryde. Built between 1930 and 1950, the property has retained its period charm while benefiting from thoughtful modern upgrades, including double glazing, a recently fitted combination gas boiler, and professional damp proofing. It is offered in excellent condition throughout.

ELLIOTT  
LINCOLN  
ESTATE AGENTS & ASSOCIATES

Reassuringly familiar, refreshingly new

Office 4, Baring Chambers Denmark Road  
Cowes  
Isle of Wight  
PO31 7SY  
01983 642622  
office@elliottlincoln.co.uk  
www.elliottlincoln.co.uk



**Ground Floor**  
Floor area 47.2 sq.m. (508 sq.ft.)

**First Floor**  
Floor area 34.7 sq.m. (374 sq.ft.)

Total floor area: 81.9 sq.m. (882 sq.ft.)

This floor plan is for illustrative purposes only. It is not drawn to scale. Any measurements, floor areas (including any total floor area), openings and orientations are approximate. No details are guaranteed, they cannot be relied upon for any purpose and do not form any part of any agreement. No liability is taken for any error, omission or misstatement. A party must rely upon its own inspection(s). Powered by www.Propertybox.io

ELLIOTT LINCOLN  
ESTATE AGENTS & ASSOCIATES

Energy Efficiency Rating		
	Current	Potential
Very energy efficient - lower running costs		
(92 plus) A		
(81-91) B		
(69-80) C		
(55-68) D	70	76
(39-54) E		
(21-38) F		
(1-20) G		
Not energy efficient - higher running costs		
England & Wales		
EU Directive 2002/91/EC		