

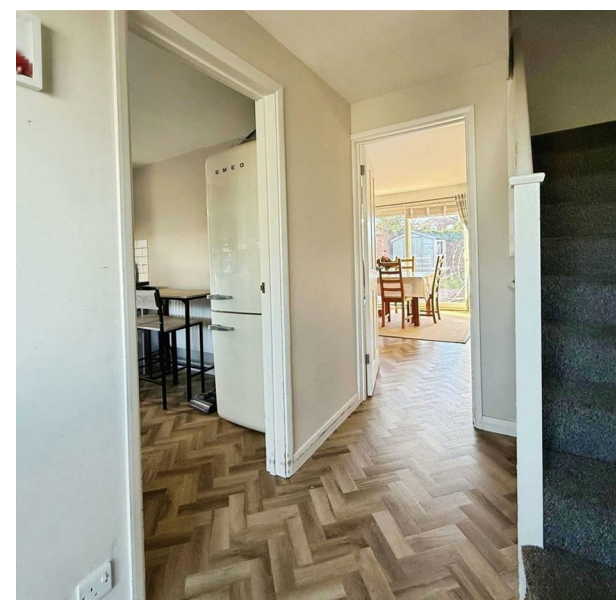
34 Pitt Street, Ryde, PO33 3EB

Asking Price £240,000

EPC Rating: D Council Tax Band: C

ELLIOTT
LINCOLN
ESTATE AGENTS & ASSOCIATES

Reassuringly familiar, refreshingly new



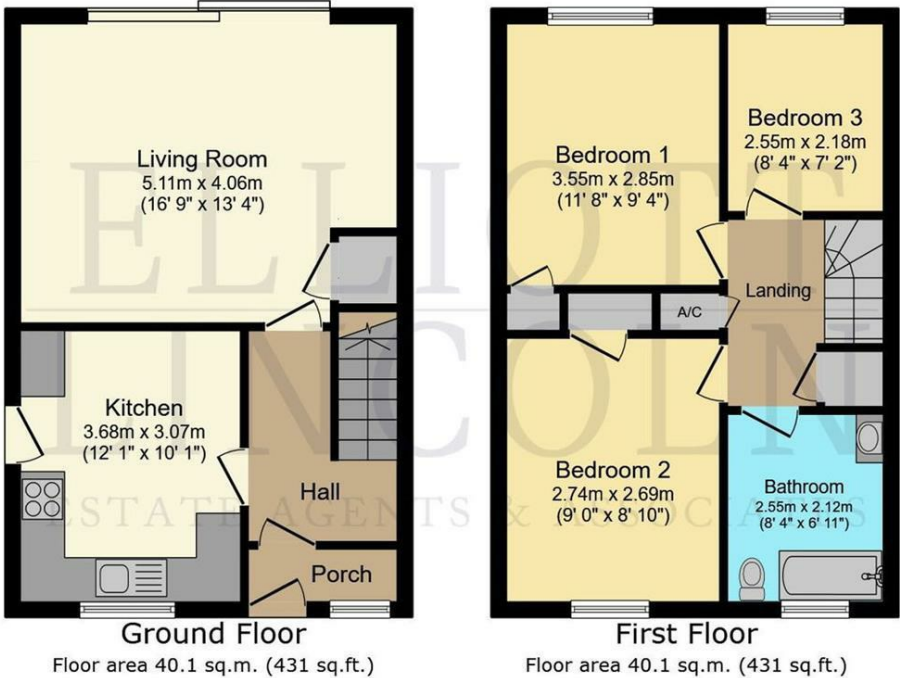
A three-bedroom semi-detached home tucked away in a quieter residential pocket of Ryde, perfectly placed for families and first-time buyers who want space, practicality and easy access to everything the town and wider Island has to offer.

ELLIOTT
LINCOLN
ESTATE AGENTS & ASSOCIATES

Reassuringly familiar, refreshingly new

Call or WhatsApp: 01983 642622
office@elliottlincoln.co.uk
www.elliottlincoln.co.uk

34 Pitt Street, Ryde, PO33 3EB



Total floor area: 80.1 sq.m. (863 sq.ft.)

This floor plan is for illustrative purposes only. It is not drawn to scale. Any measurements, floor areas (including any total floor area), openings and orientations are approximate. No details are guaranteed, they cannot be relied upon for any purpose and do not form any part of any agreement. No liability is taken for any error, omission or misstatement. A party must rely upon its own inspection(s). Powered by www.Propertybox.io

ELLIOTT LINCOLN
ESTATE AGENTS & ASSOCIATES

Energy Efficiency Rating		
	Current	Potential
Very energy efficient - lower running costs		
(92 plus) A		86
(81-91) B		
(69-80) C		67
(55-68) D		
(39-54) E		
(21-38) F		
(1-20) G		
Not energy efficient - higher running costs		
England & Wales		EU Directive 2002/91/EC