

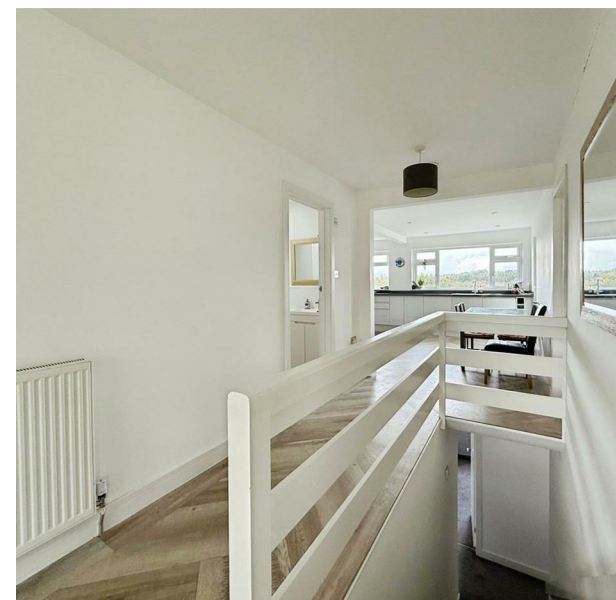
Hil-Dalla Main Road, Havenstreet, Ryde, PO33 4DJ

Asking Price £325,000

EPC Rating: D Council Tax Band: C

ELLIOTT
LINCOLN
ESTATE AGENTS & ASSOCIATES

Reassuringly familiar, refreshingly new



Nestled in the pretty village of Havenstreet, this stylish semi-detached home truly offers something a little different. With the accommodation cleverly arranged over three levels, the main living space enjoys the best of the light and views, while the bedrooms are tucked away on the lower floor for peace and privacy.

Call or WhatsApp: 01983 642622
office@elliottlincoln.co.uk
www.elliottlincoln.co.uk

Hil-Dalla, Main Road, Ryde, PO33 4DJ



Lower Ground Floor
Floor area 37.7 sq.m. (406 sq.ft.)

Ground Floor
Floor area 70.5 sq.m. (759 sq.ft.)

Total floor area: 108.2 sq.m. (1,165 sq.ft.)

This floor plan is for illustrative purposes only. It is not drawn to scale. Any measurements, floor areas (including any total floor area), openings and orientations are approximate. No details are guaranteed, they cannot be relied upon for any purpose and do not form any part of any agreement. No liability is taken for any error, omission or misstatement. A party must rely upon its own inspection(s). Powered by www.Propertybox.io

Energy Efficiency Rating		
	Current	Potential
Very energy efficient - lower running costs		
(92 plus) A		
(81-91) B		
(69-80) C		
(55-68) D		
(39-54) E		
(21-38) F		
(1-20) G		
Not energy efficient - higher running costs		
England & Wales	60	77
EU Directive 2002/91/EC		