



Bush & Co.

210A Cherry Hinton Road, Cambridge - £2,400 PCM

A delightful four bedroom first floor flat conveniently located on Cherry Hinton Road offering quick access to Addenbrookes Hospital, the mainline Train Station and City Centre and within walking distance of many shops, cafes and local amenities.

Entrance

Ground floor entrance with stairs leading to first floor

Kitchen

11'4" x 8'11" (3.46 x 2.72)
Rear fitted kitchen with electric hob and oven, two fridge freezers and washer-dryer

Living Room

13'4" x 10'4" (4.07 x 3.16)
Spacious bay fronted living room

Bedroom 1

14'2" x 10'4" (4.32 x 3.16)
Front double bedroom with bay window and wardrobe

Bedroom 2

11'5" x 8'11" (3.49 x 2.72)
Double bedroom with wardrobe

Bedroom 3

11'5" x 8'11" (3.49 x 2.72)
Double bedroom with wardrobe

Bedroom 4

9'1" x 9'0" (2.77 x 2.76)
Fourth rear bedroom with wardrobe

Shower Rooms

Two modern shower rooms

Key information

EPC Rating – D
Council Tax Band – D (Cambridge City Council)
Rent – £2400 pcm (£553 pw)
Deposit – £2769
Long term tenancy
Available unfurnished now

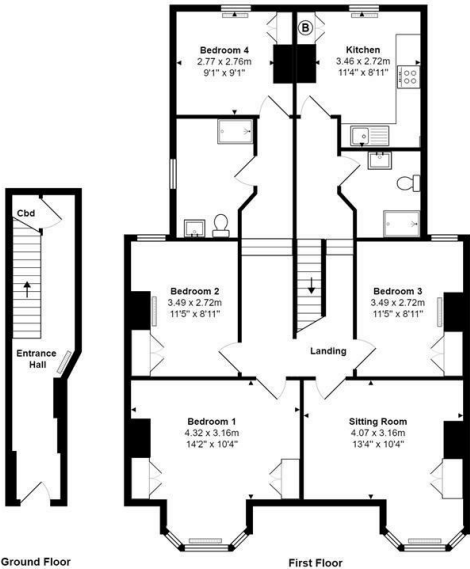
- Four Bedroom Flat
 - 108.4 sqm / 1167 sqft
 - Sorry, No Smokers
 - Gas Central Heating
 - Small Rear Garden
- Two Shower Rooms
 - Unfurnished Property
 - Sorry, No Pets Allowed
 - Double Glazed Throughout
 - Available To Share Groups

IMPORTANT NOTICE

These particulars, whilst believed to be accurate are set out as a general outline only for guidance and do not constitute any part of an offer or contract. Intending tenants should not rely on them as statements of representation of fact, but must satisfy themselves by inspection or otherwise as to their accuracy. No person in this firms employment has the authority to make or give any representation or warranty in respect of the property.



Cherry Hinton Road, Cambridge, CB1 7AW



Total Area: 108.4 m² ... 1167 ft²
All measurements are approximate and for display purposes only
Plan prepared by charlesjarrison.co.uk

