



House - Detached (EPC Rating: C)

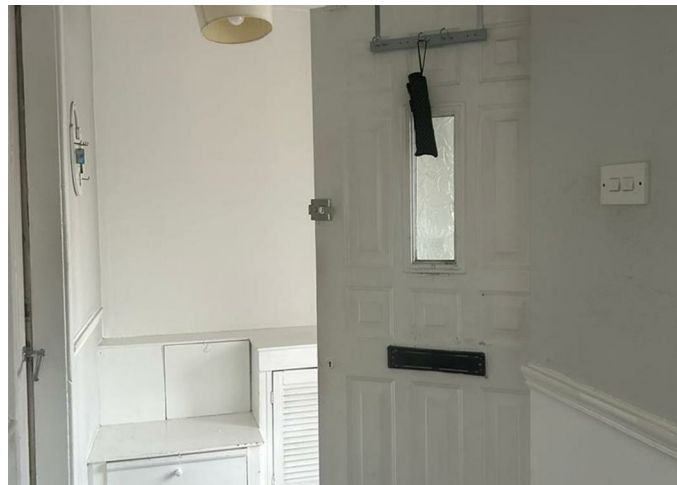
# 4 LEWIS STREET ECCLES, MANCHESTER, LANCASHIRE, M30 0QA

PCM

## £1,300

### FEATURES

- CENTRAL LOCATION
- DRIVEWAY
- AVAILABLE NOW



  
FREENEY & OLIVER  
ESTATES

# 3 Bedroom House - Detached located in Manchester

FREENEY & OLIVER ESTATES are delighted to offer FOR RENT this THREE BED detached house which would make a great family home in a central location.

It is based in a very central area close to transport links into Manchester and surrounding areas and a short distance away from Salford Royal Hospital (8 min by car).

The property comprises of; entrance porch, open plan living and dining room and kitchen. To the first floor there are three bedrooms and a family bathroom.

Externally there is a gated off driveway.

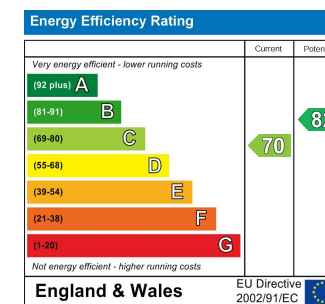
Please contact us early to book in your viewing!

Call us on

[info@freeneyandoliverestates.co.uk](mailto:info@freeneyandoliverestates.co.uk)

**Council Tax Band**

**C**



Agents Note: Whilst every care has been taken to prepare these particulars, they are for guidance purposes only. All measurements are approximate and are for general guidance purposes only and whilst every care has been taken to ensure their accuracy, they should not be relied upon and potential buyers are advised to recheck the measurements.