

PCM
£4,760 PCM
1-2 Clarendon Square
Leamington Spa, CV32 5RB

PROPERTY SUMMARY

**** 360 Virtual Tour on this STUDENT PROPERTY**** A purpose built student property located in a popular North Leamington Spa location just a short walk from the Parade. With secure video entry, CCTV and is fitted with modern furnishings throughout. FREE WI-FI. Viewing is highly recommended. Available 1st September .

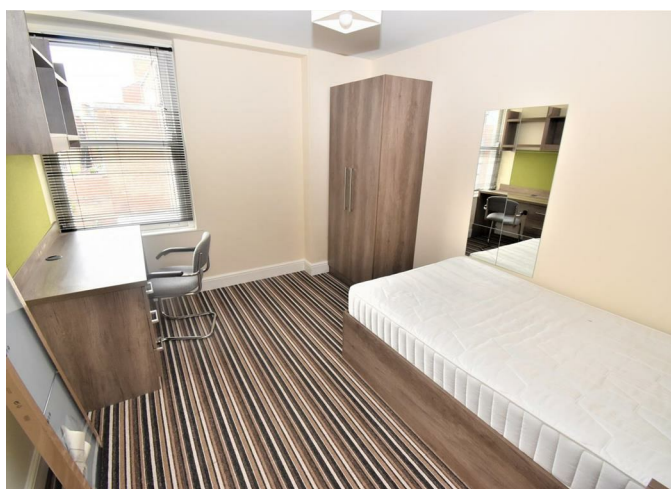
8



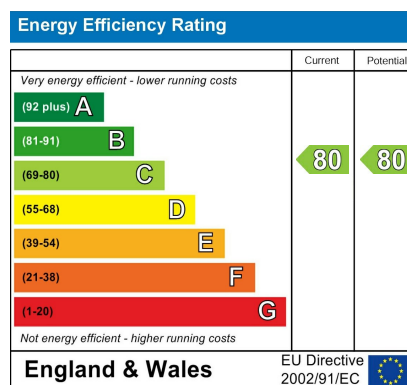
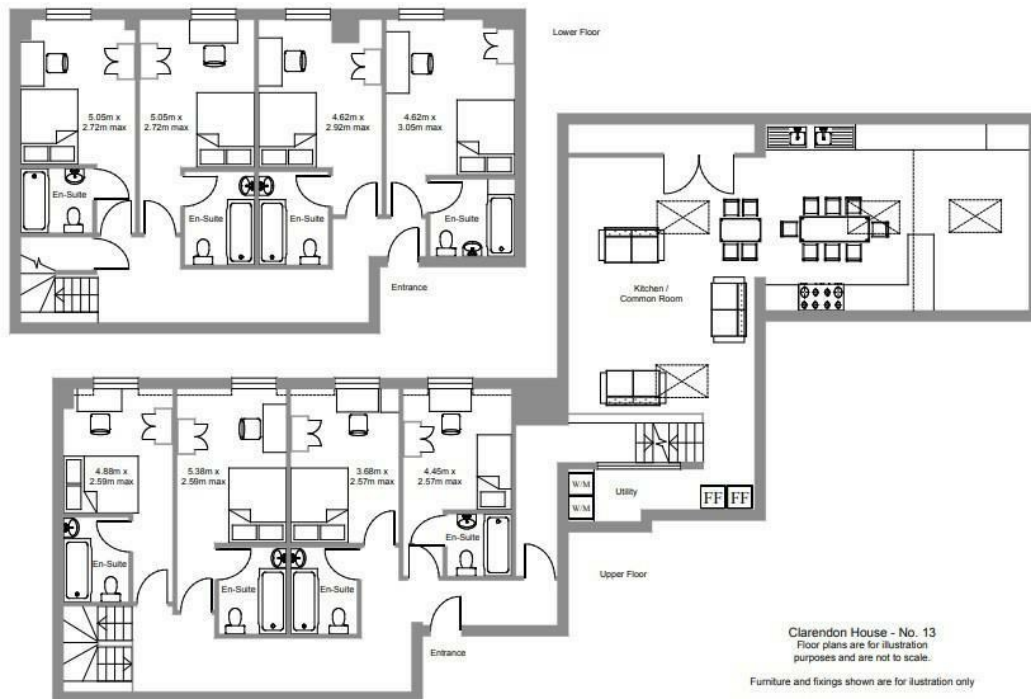
8



1







Agents Note: Whilst every care has been taken to prepare these particulars, they are for guidance purposes only. All measurements are approximate and are for general guidance purposes only and whilst every care has been taken to ensure their accuracy, they should not be relied upon and potential buyers/tenants are advised to recheck the measurements



OFFICE ADDRESS
8a Regent Street
Leamington Spa
Warwickshire
CV32 5HO

OFFICE DETAILS