

PCM  
**£1,350 PCM**  
**George Street**  
Leamington Spa, CV31 1HA



## PROPERTY SUMMARY

**\*\*360 Virtual Tour on this STUDENT PROPERTY\*\***The George has bespoke student accommodation that is located ideally for the Uni bus stops as well as being close to the Town Centre. Benefits from FREE WI-FI. Flat 12 has three double bedrooms and access to an outside social area. See our floor plan and video tour!!! Will consider Individual room lets. Available 14th September

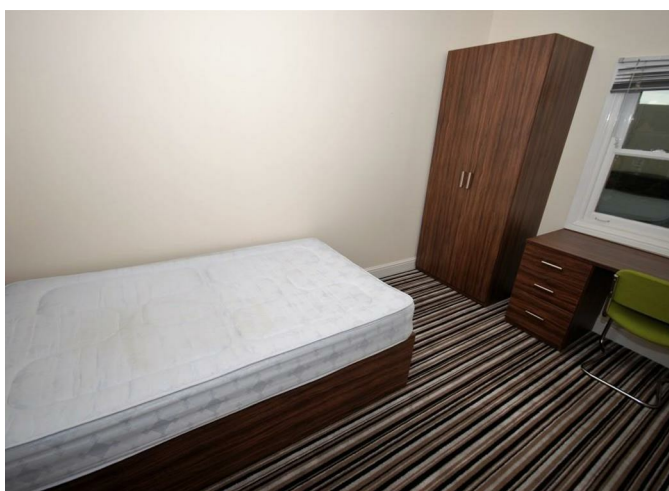
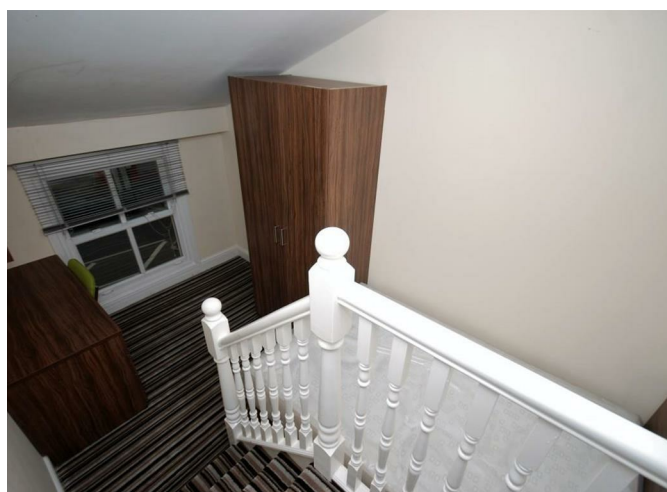
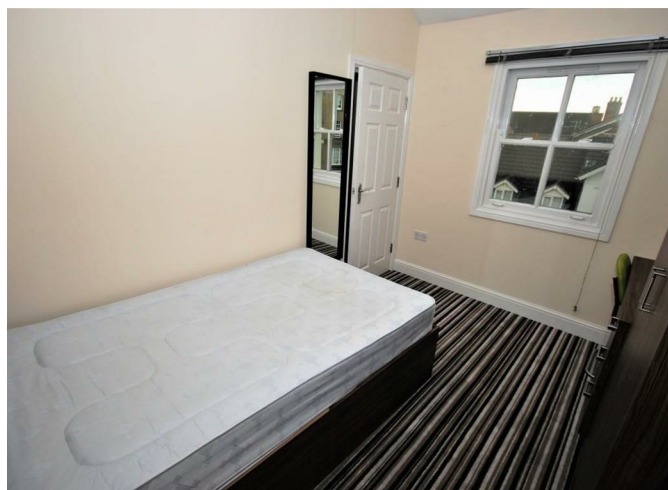
3



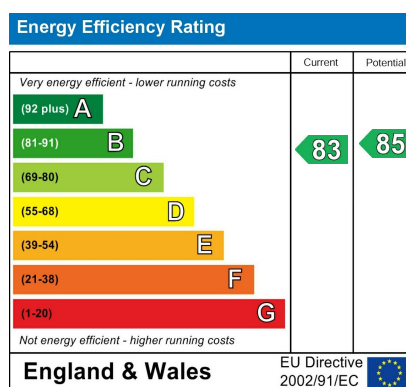
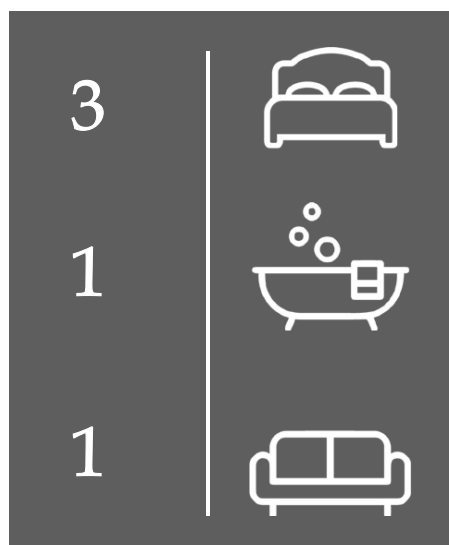
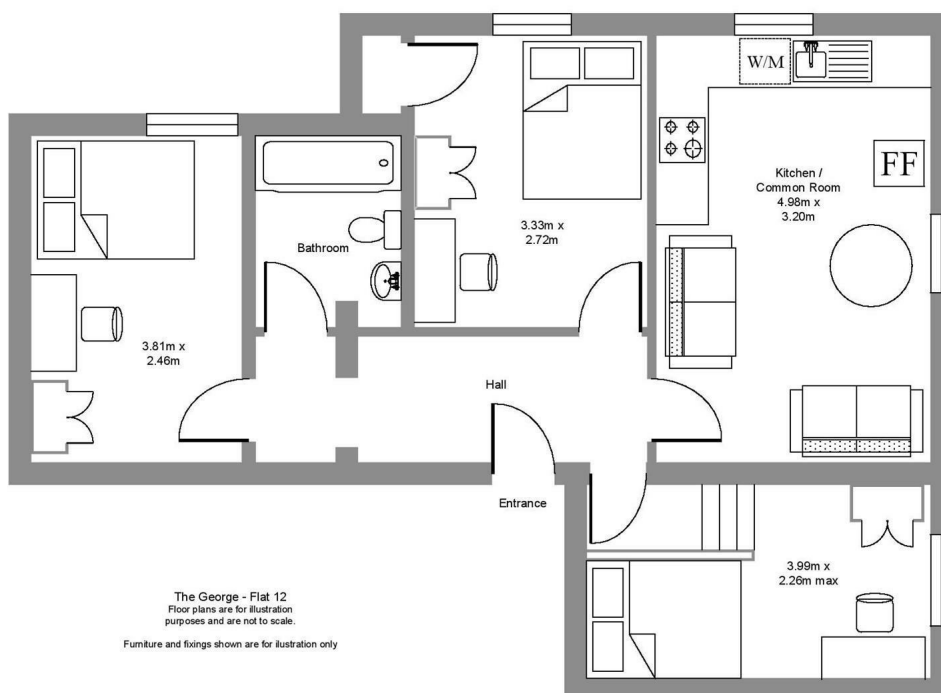
1



1







Agents Note: Whilst every care has been taken to prepare these particulars, they are for guidance purposes only. All measurements are approximate and are for general guidance purposes only and whilst every care has been taken to ensure their accuracy, they should not be relied upon and potential buyers/tenants are advised to recheck the measurements



**OFFICE ADDRESS**  
8a Regent Street  
Leamington Spa  
Warwickshire  
CV32 5HO

**OFFICE DETAILS**