



PCM

£4,950 PCM

Chapel Street

Leamington Spa, CV31 1EU

PROPERTY SUMMARY

**** 360 Virtual Tour on this STUDENT PROPERTY**** A 10 bedroom, 5-bathroom Student Property located in a convenient location near the Town Centre and Uni bus stop! The house is located in a secure gated student development with outside social areas and CCTV. Wifi included. Available 1st September.

10



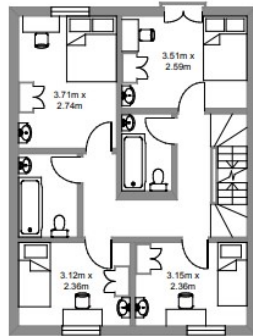
5



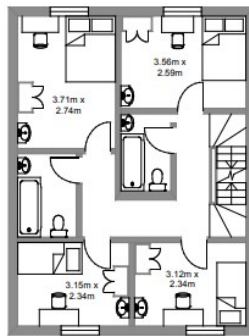
3



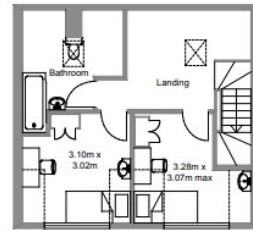




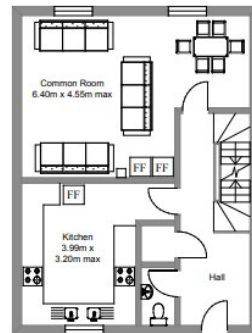
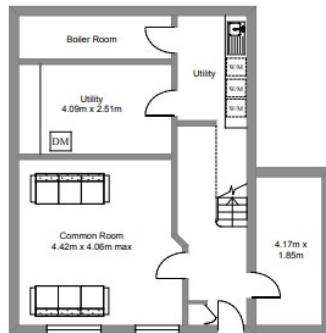
First Floor



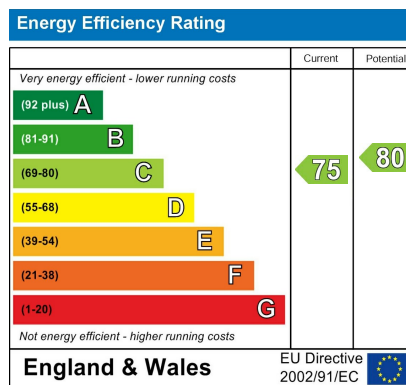
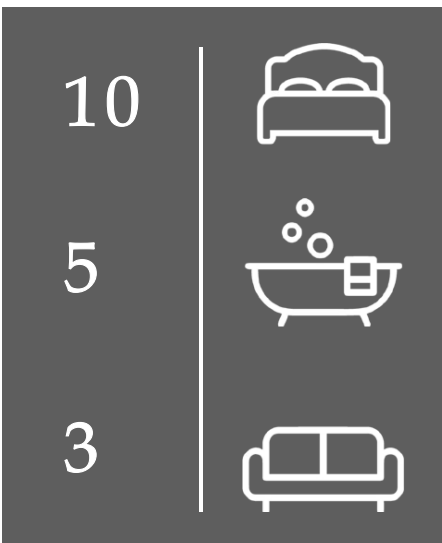
Second Floor



Third Floor



Chapel Cross - Flat 2
Floor plans are for illustration purposes and are not to scale.
Furniture and fixings shown are for illustration only



Agents Note: Whilst every care has been taken to prepare these particulars, they are for guidance purposes only. All measurements are approximate and are for general guidance purposes only and whilst every care has been taken to ensure their accuracy, they should not be relied upon and potential buyers/tenants are advised to recheck the measurements



OFFICE ADDRESS
8a Regent Street
Leamington Spa
Warwickshire
CV32 5HO

OFFICE DETAILS