

PCM  
**£2,910 PCM**  
**Clarendon Avenue**  
Leamington Spa, CV32 4SG



## PROPERTY SUMMARY

**\*\*360 Virtual Tour on this STUDENT PROPERTY\*\*** A 6 bedroom student property located in a sought after north Leamington spa location with easy access to The Parade. The property has a large lounge and kitchen with appliances, 6 good size bedrooms in addition to a bathroom and shower room. See our floor plan and video tour!! Available 1st August.

6



2

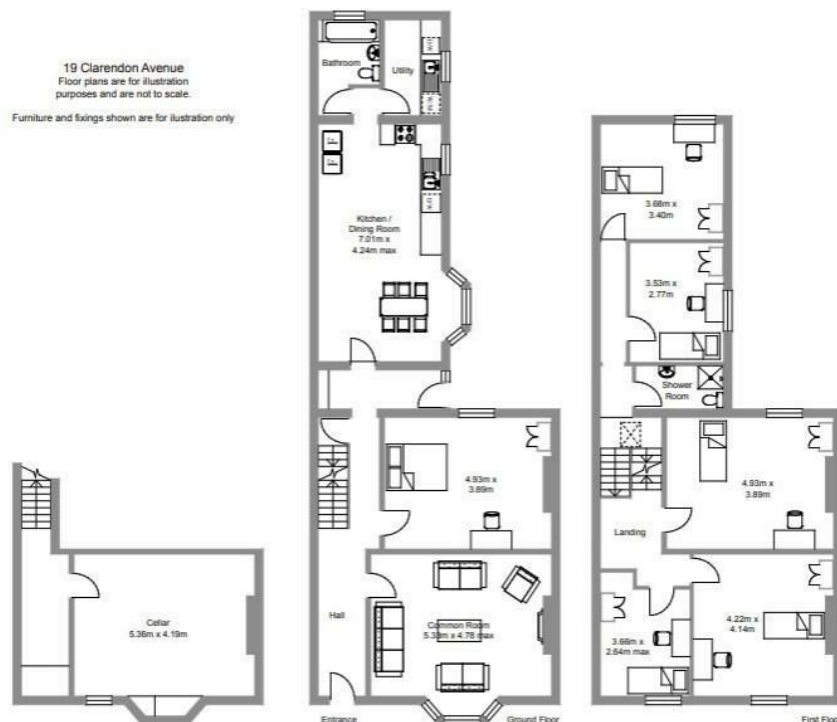


1





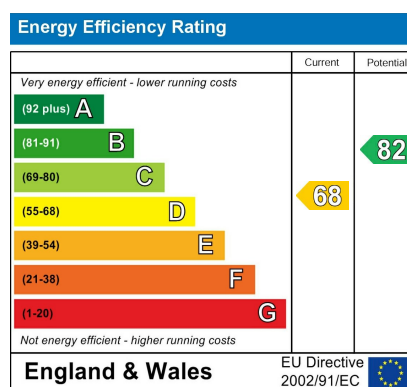
19 Clarendon Avenue  
Floor plans are for illustration  
purposes and are not to scale.  
Furniture and fixings shown are for illustration only



6

2

1



Agents Note: Whilst every care has been taken to prepare these particulars, they are for guidance purposes only. All measurements are approximate and are for general guidance purposes only and whilst every care has been taken to ensure their accuracy, they should not be relied upon and potential buyers/tenants are advised to recheck the measurements



**OFFICE ADDRESS**  
8a Regent Street  
Leamington Spa  
Warwickshire  
CV32 5HO

**OFFICE DETAILS**