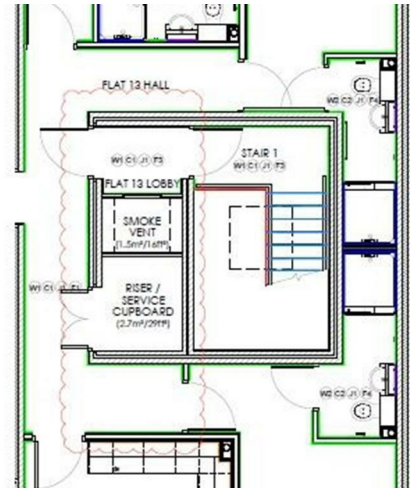


PER MONTH  
**£3,000 Per Month**  
**Wise Terrace**  
leamington Spa, CV31 3AS

Discover the ultimate in student living at this brand new development. Boasting exceptionally spacious bedrooms, each with its own modern ensuite, these apartments offer generous layouts designed for comfort and style. Step out onto your private balcony and enjoy stunning canal views, the perfect backdrop for study breaks or relaxing evenings. Ideally located just moments from the train station and a university bus stop, everything you need is within easy reach—making commuting effortless and student life truly seamless. AVAILABLE AUGUST 2026

0





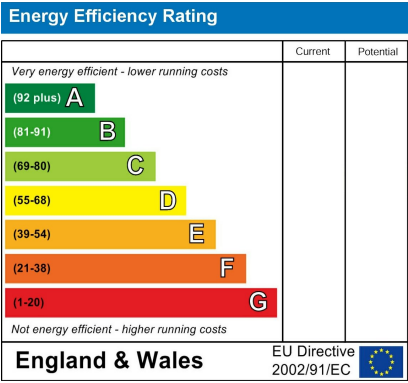
3

3

0







Agents Note: Whilst every care has been taken to prepare these particulars, they are for guidance purposes only. All measurements are approximate and are for general guidance purposes only and whilst every care has been taken to ensure their accuracy, they should not be relied upon and potential buyers/tenants are advised to recheck the measurements



OFFICE ADDRESS  
8a Regent Street  
Leamington Spa  
Warwickshire  
CV32 5HO

OFFICE DETAILS