

PCM
£2,000 PCM
Russell Terrace
Leamington Spa, CV31 1HE

PROPERTY SUMMARY

****360 Virtual Tour on this STUDENT PROPERTY**** Four bedroom student apartment in an excellent location ideal for the town centre. Four bedrooms, two bath/shower rooms and open plan living area with kitchen. FREE WIFI. Viewing highly recommended. Available 1st September.

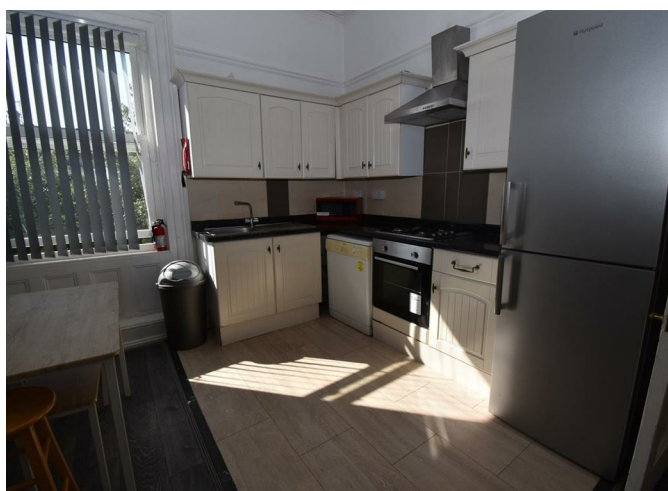
4



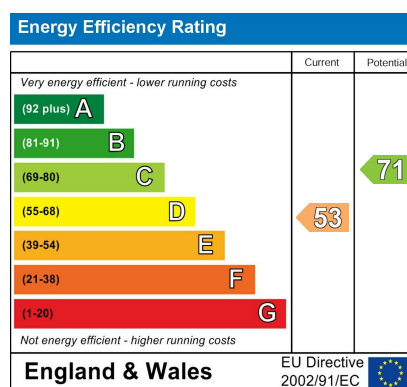
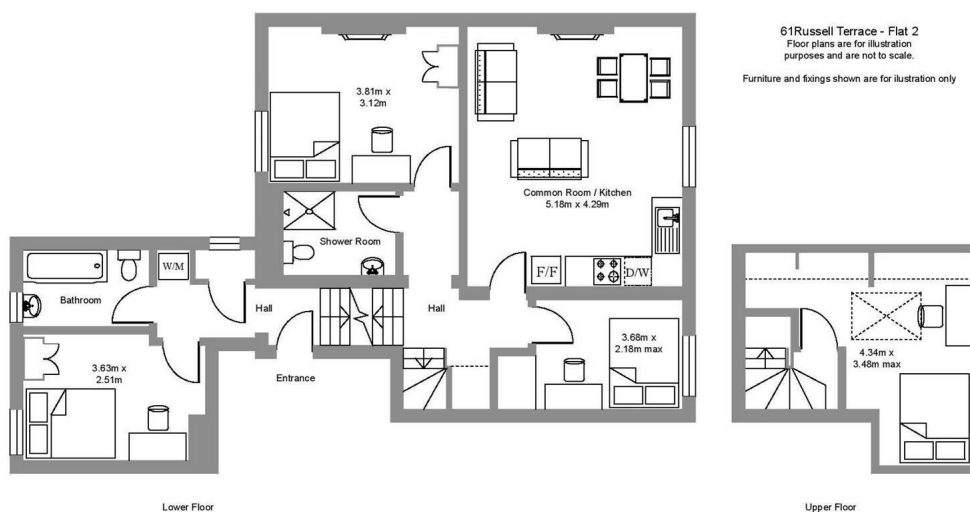
2



1







Agents Note: Whilst every care has been taken to prepare these particulars, they are for guidance purposes only. All measurements are approximate and are for general guidance purposes only and whilst every care has been taken to ensure their accuracy, they should not be relied upon and potential buyers/tenants are advised to recheck the measurements



OFFICE ADDRESS
8a Regent Street
Leamington Spa
Warwickshire
CV32 5HO

OFFICE DETAILS