

PCM
£1,800 PCM
Southlea Avenue
Leamington Spa, CV31 3JN

PROPERTY SUMMARY

**** STUDENT PROPERTY**** A Newly refurbished four bedroom student property with one bathroom ideally located for the South end of town and railway station. Viewing recommended. Available 1st September .

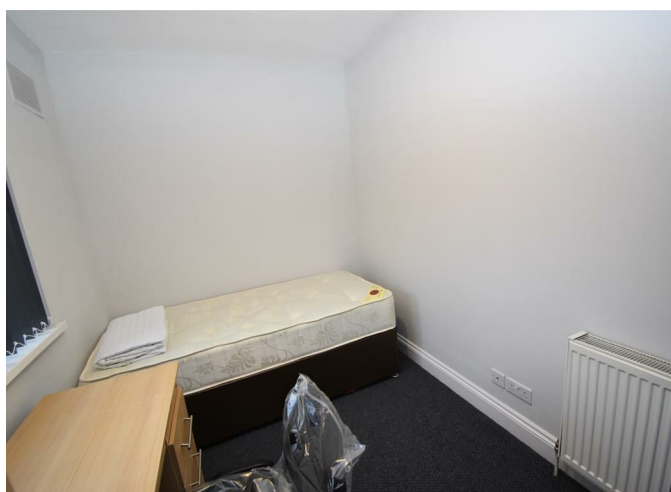
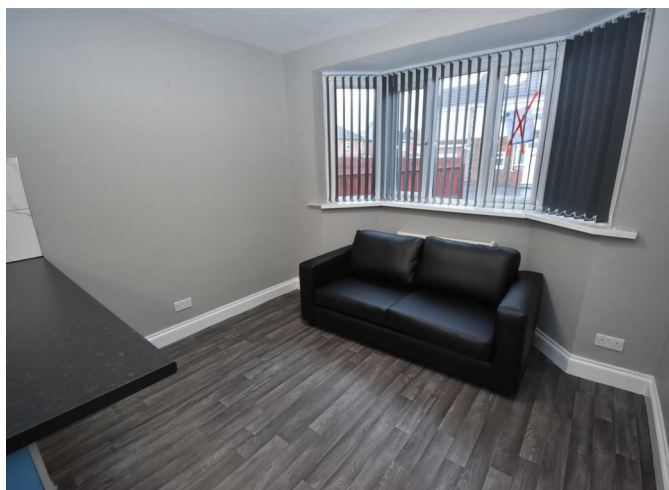
4



1



1





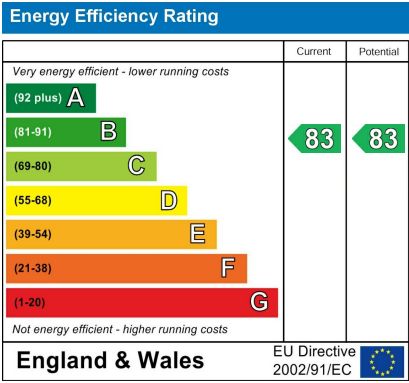
4

1

1







Agents Note: Whilst every care has been taken to prepare these particulars, they are for guidance purposes only. All measurements are approximate and are for general guidance purposes only and whilst every care has been taken to ensure their accuracy, they should not be relied upon and potential buyers/tenants are advised to recheck the measurements



OFFICE ADDRESS
 8a Regent Street
 Leamington Spa
 Warwickshire
 CV32 5HO

OFFICE DETAILS