



PCM

£1,485 PCM

6 Radford Road

Leamington Spa, CV31 1LX

PROPERTY SUMMARY

****STUDENT PROPERTY****

Experience the perfect blend of style, convenience, and comfort in this beautifully presented three double bedroom student property, located in the vibrant town centre. Ideally positioned just a short walk from the University bus stop, this home provides effortless access to campus and local amenities.

The property features a modern fitted kitchen, a bathroom and shower room, and high-speed Wi-Fi included, ensuring both comfort and connectivity. Designed with students in mind, each bedroom offers a bright and spacious retreat for study and relaxation.

Available from 15th August, this town centre residence is the ideal choice for students seeking luxury and convenience throughout the academic year.

3



1

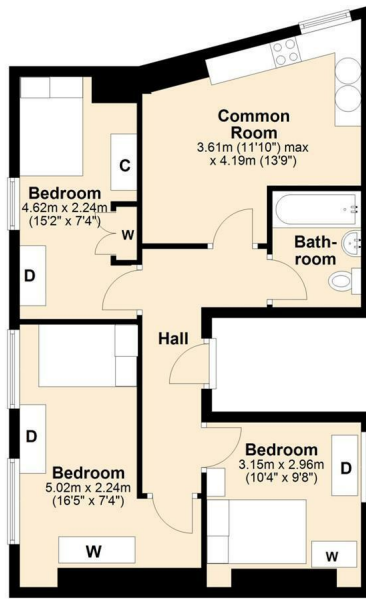


1



First Floor

Approx. 59.3 sq. metres (637.8 sq. feet)



Total area: approx. 59.3 sq. metres (637.8 sq. feet)
Flat 4, 6 Radford Road, Leamington Spa

3
1
1

Energy Efficiency Rating		
	Current	Potential
Very energy efficient - lower running costs		
(92 plus) A		
(81-91) B		
(69-80) C	75	80
(55-68) D		
(39-54) E		
(21-38) F		
(1-20) G		
Not energy efficient - higher running costs		
England & Wales	EU Directive 2002/91/EC	

Agents Note: Whilst every care has been taken to prepare these particulars, they are for guidance purposes only. All measurements are approximate and are for general guidance purposes only and whilst every care has been taken to ensure their accuracy, they should not be relied upon and potential buyers/tenants are advised to recheck the measurements



OFFICE ADDRESS
 8a Regent Street
 Leamington Spa
 Warwickshire
 CV32 5HO

OFFICE DETAILS