

PCM
£4,760 PCM
Radford Road
Leamington Spa, CV31 1NE

PROPERTY SUMMARY

** 360 Virtual Tour on this STUDENT PROPERTY**

An exceptional 8 bedroom, 8 bathroom student property finished throughout to a high specification. The property has 8 double bedrooms with modern furniture and 8 fitted shower rooms. Available 15th August

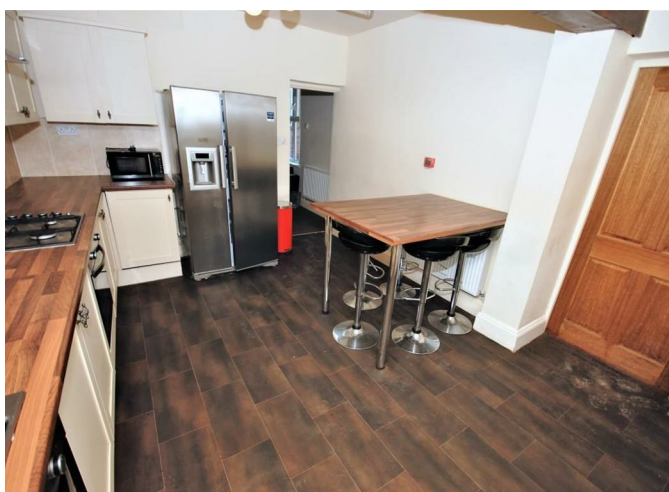
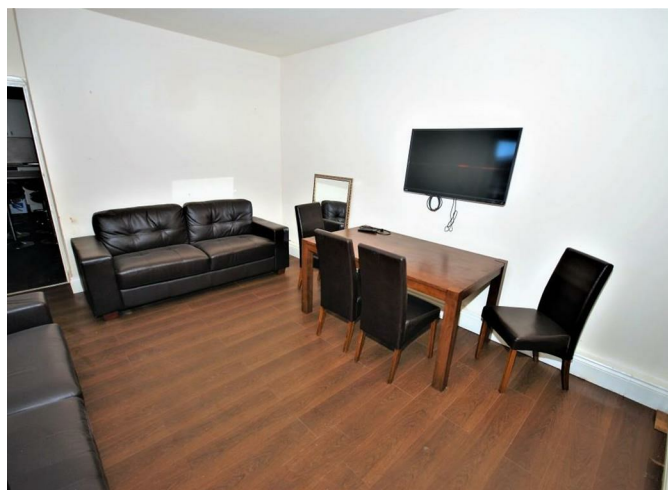
8



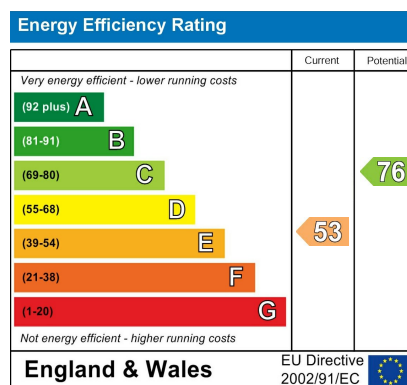
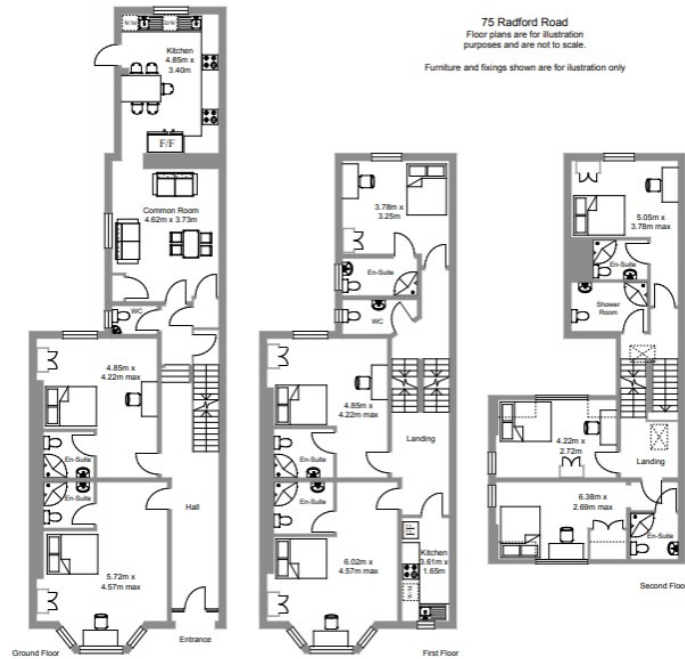
8



1







Agents Note: Whilst every care has been taken to prepare these particulars, they are for guidance purposes only. All measurements are approximate and are for general guidance purposes only and whilst every care has been taken to ensure their accuracy, they should not be relied upon and potential buyers/tenants are advised to recheck the measurements



OFFICE ADDRESS
8a Regent Street
Leamington Spa
Warwickshire
CV32 5HO

OFFICE DETAILS