



PER MONTH
£600 Per Month
10 Victoria Terrace
Leamington Spa, CV31 3AB

PROPERTY SUMMARY

**** 360 Virtual Tour on this STUDENT PROPERTY**
DOUBLE ROOM AVAILABLE HERE!!!!**

Experience the perfect blend of style, comfort, and convenience in this two double en suite bedroom student apartment, ideally situated in Leamington Spa town centre.

Designed with attention to detail, the apartment offers a generous living space complemented by a modern fitted kitchen, perfect for both study and relaxation. The interiors are well-presented and thoughtfully designed, creating a sophisticated environment for students who value quality and comfort.

With the town centre on your doorstep, enjoy easy access to shops, cafes, transport links, and all local amenities.

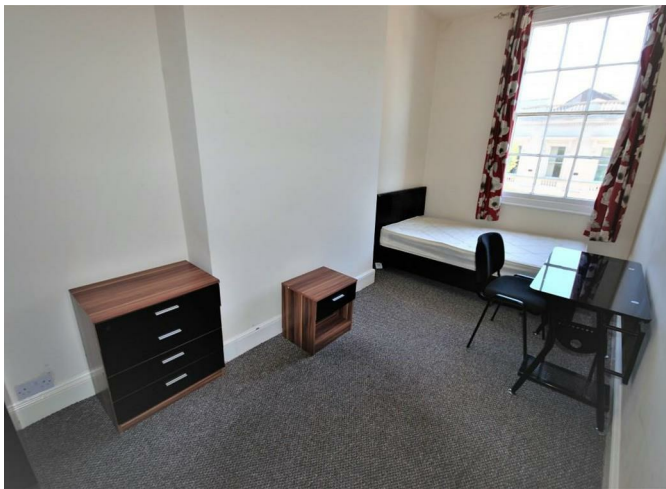
1

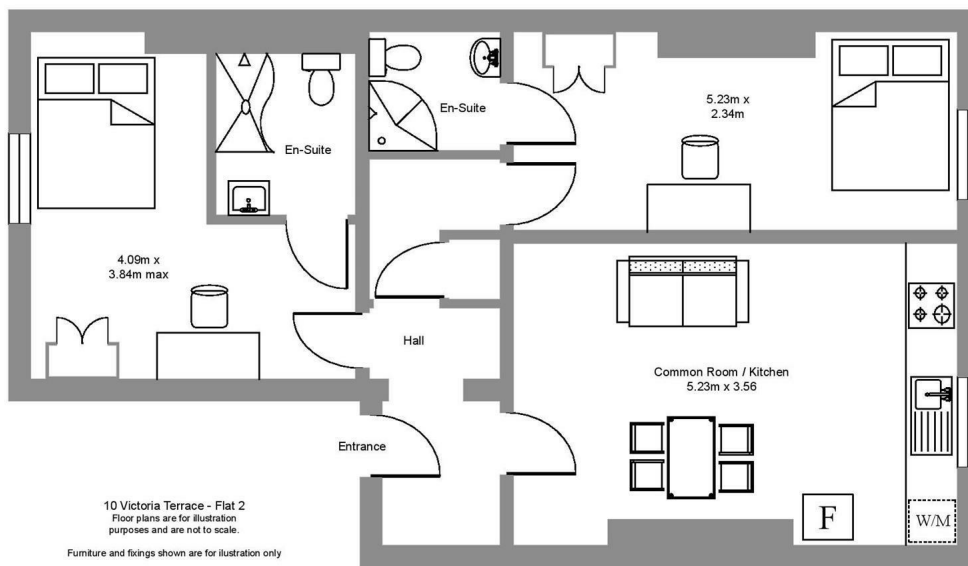


1



1





Energy Efficiency Rating		
	Current	Potential
<i>Very energy efficient - lower running costs</i>		
(92 plus) A		
(81-91) B		86
(69-80) C	72	
(55-68) D		
(39-54) E		
(21-38) F		
(1-20) G		
<i>Not energy efficient - higher running costs</i>		
England & Wales	EU Directive 2002/91/EC	

Agents Note: Whilst every care has been taken to prepare these particulars, they are for guidance purposes only. All measurements are approximate and are for general guidance purposes only and whilst every care has been taken to ensure their accuracy, they should not be relied upon and potential buyers/tenants are advised to recheck the measurements



OFFICE ADDRESS
 8a Regent Street
 Leamington Spa
 Warwickshire
 CV32 5HO

OFFICE DETAILS