



PCM

£1,295 PCM

Portland Place West

Leamington Spa, CV32 5EU

PROPERTY SUMMARY

STUNNING GARDEN APARTMENT!! A rare two double bedroom, garden apartment in Leamington Spa Town Centre. The property comprises a kitchen, lounge with feature fire place, two double bedrooms, en-suite and further shower room and landscaped private garden (including monthly gardener). Unfurnished and Available Now

2



2



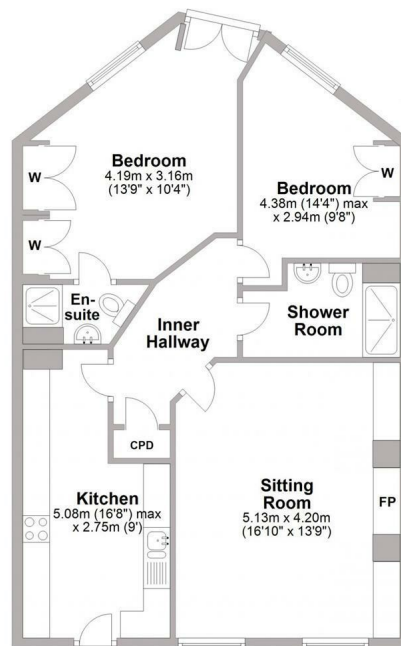
1







Ground Floor
Approx. 73.8 sq. metres (794.0 sq. feet)



Energy Efficiency Rating		
	Current	Potential
Very energy efficient - lower running costs		
(92 plus) A		
(81-91) B		
(69-80) C		80
(55-68) D	64	
(39-54) E		
(21-38) F		
(1-20) G		
Not energy efficient - higher running costs		
England & Wales		EU Directive 2002/91/EC

Agents Note: Whilst every care has been taken to prepare these particulars, they are for guidance purposes only. All measurements are approximate and are for general guidance purposes only and whilst every care has been taken to ensure their accuracy, they should not be relied upon and potential buyers/tenants are advised to recheck the measurements



OFFICE ADDRESS
8a Regent Street
Leamington Spa
Warwickshire
CV32 5HO

OFFICE DETAILS
01926 354 400
leamington@handlesproperty.co.uk