



PER MONTH  
**£695 Per Month**  
**Regent Place**  
Leamington Spa, CV31 1EH

## PROPERTY SUMMARY

A one bedroom property in popular residential location close to the town centre. This Apartment comprises a open plan kitchen and lounge area, Double bedroom, W/C and separate shower cubicle. Furnished and Available NOW

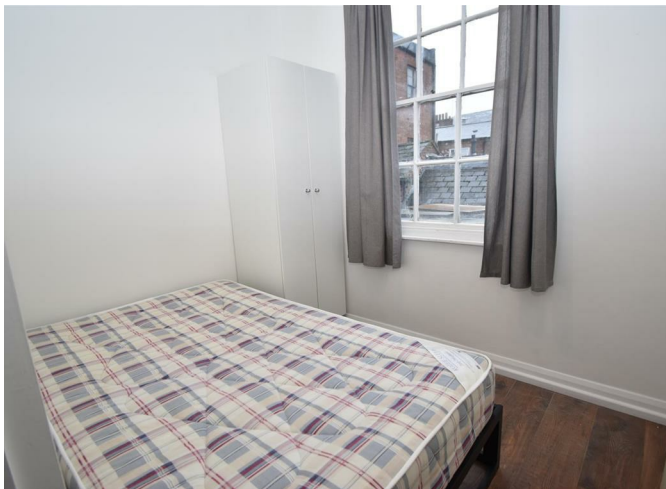
1



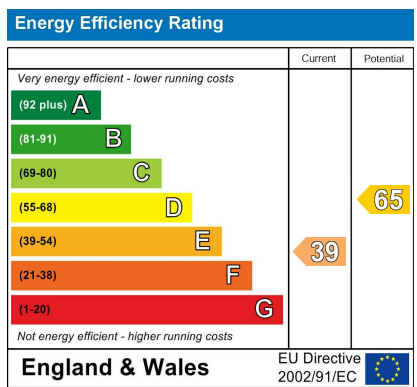
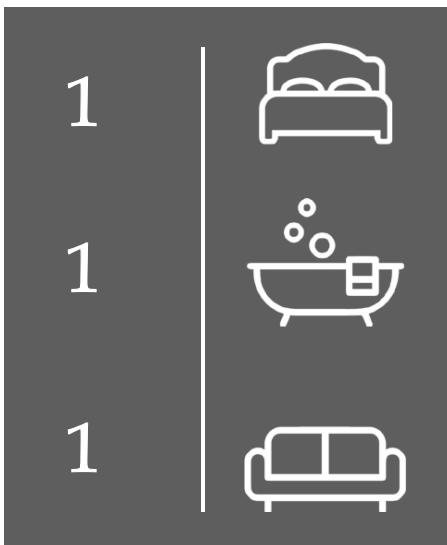
1



1







Agents Note: Whilst every care has been taken to prepare these particulars, they are for guidance purposes only. All measurements are approximate and are for general guidance purposes only and whilst every care has been taken to ensure their accuracy, they should not be relied upon and potential buyers/tenants are advised to recheck the measurements



**OFFICE ADDRESS**  
 8a Regent Street  
 Leamington Spa  
 Warwickshire  
 CV32 5HO

**OFFICE DETAILS**  
 01926 354 400  
 leamington@handlesproperty.co.uk