

PCM

£1,250 PCM

Warwick Place

Leamington Spa, CV32 5BS

## PROPERTY SUMMARY

A stunning two double bedroom apartment located a short walk away from Leamington Spa Town Centre. The property comprises an open plan lounge/Kitchen with feature bay window, 2 double bedroom both with built in wardrobes and three piece bathroom suite. Unfurnished and Available mid October.

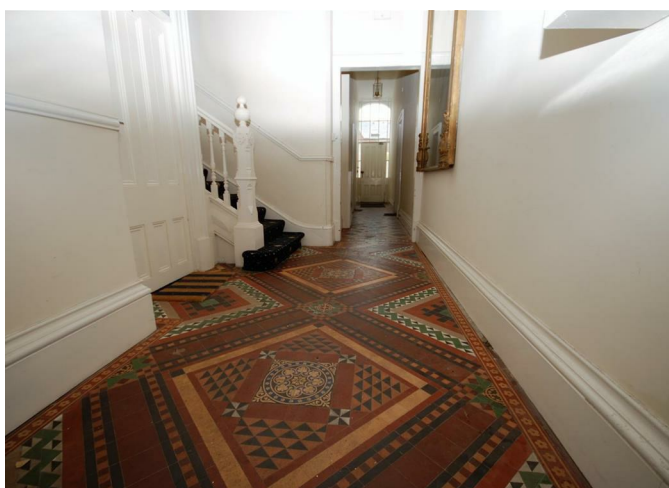
2



1



1





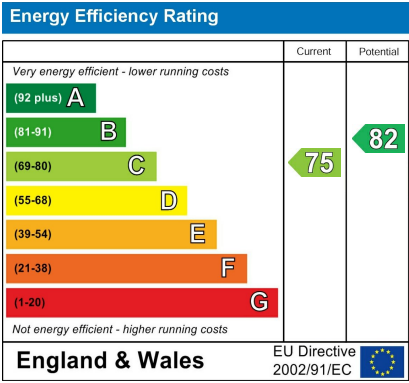
2

1

1







Agents Note: Whilst every care has been taken to prepare these particulars, they are for guidance purposes only. All measurements are approximate and are for general guidance purposes only and whilst every care has been taken to ensure their accuracy, they should not be relied upon and potential buyers/tenants are advised to recheck the measurements



OFFICE ADDRESS  
8a Regent Street  
Leamington Spa  
Warwickshire  
CV32 5HO

OFFICE DETAILS  
01926 354 400  
leamington@handlesproperty.co.uk