

PCM  
**£995 PCM**  
**Cornwall House**  
Leamington Spa, CV32 6AJ

## PROPERTY SUMMARY

A smart, two bedroom duplex apartment in a popular North Leamington location. The property is situated close to shops and amenities, and a short walk from the town centre. Comprising fitted kitchen, lounge and two bedrooms and a bathroom. Unfurnished and available 5th November 2025

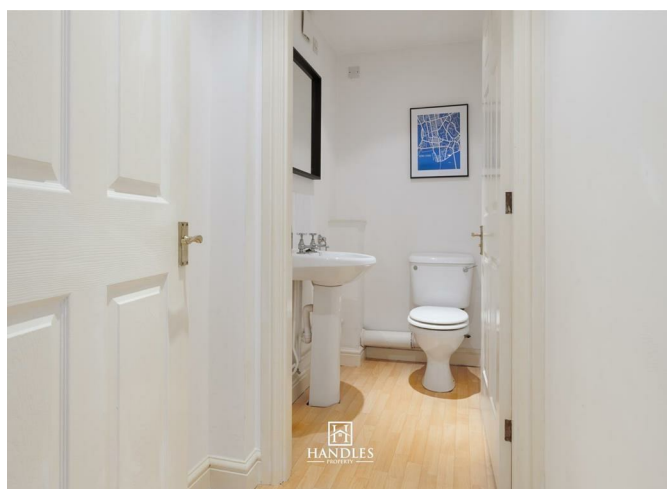
2



1



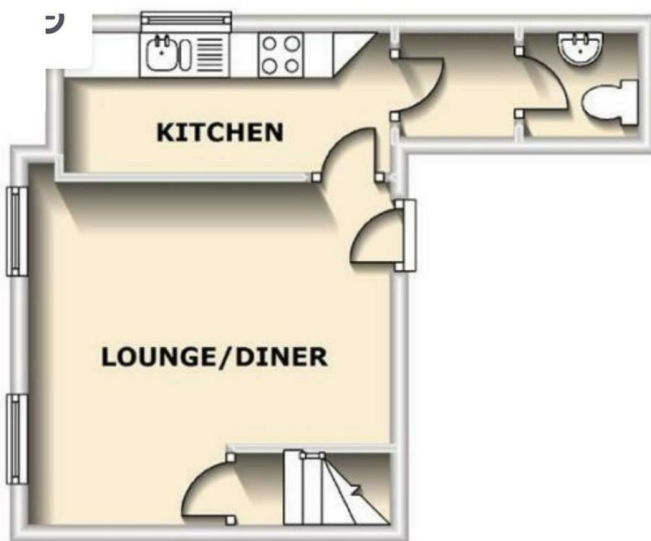
1



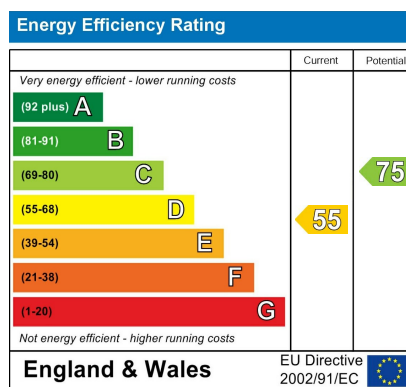
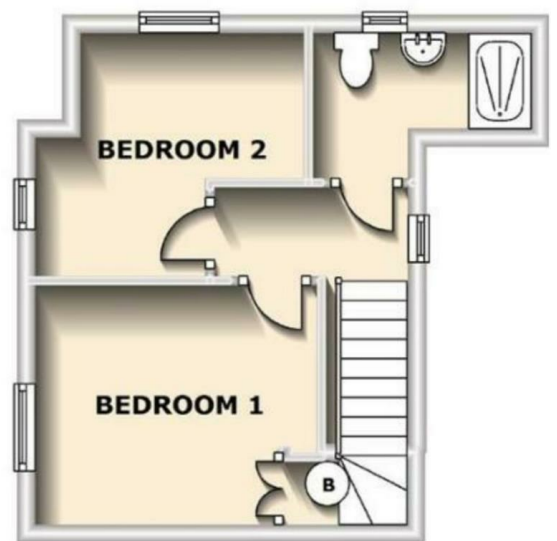




## GROUND FLOOR



## FIRST FLOOR



Agents Note: Whilst every care has been taken to prepare these particulars, they are for guidance purposes only. All measurements are approximate and are for general guidance purposes only and whilst every care has been taken to ensure their accuracy, they should not be relied upon and potential buyers/tenants are advised to recheck the measurements



**OFFICE ADDRESS**  
8a Regent Street  
Leamington Spa  
Warwickshire  
CV32 5HO

**OFFICE DETAILS**  
01926 354 400  
leamington@handlesproperty.co.uk