

PCM
£695 PCM
Rugby Road
Leamington Spa, CV32 6DZ

PROPERTY SUMMARY

A beautifully finished, executive, large double bedroom to rent close to the town centre. The room is part of a newly refurbished house which benefits from a communal kitchen area with appliances, a lounge/diner and two shared bathrooms. The room is furnished with a large double bed, wardrobe, desk and chair. ****ALL UTILITY BILLS INCLUDED****. Available Early October 2025

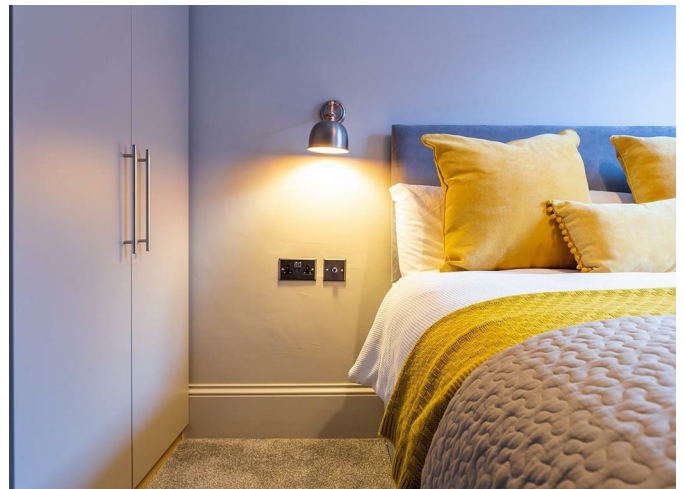
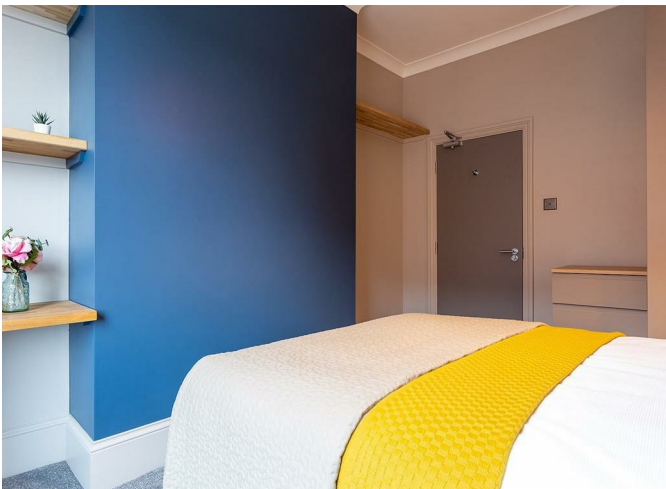
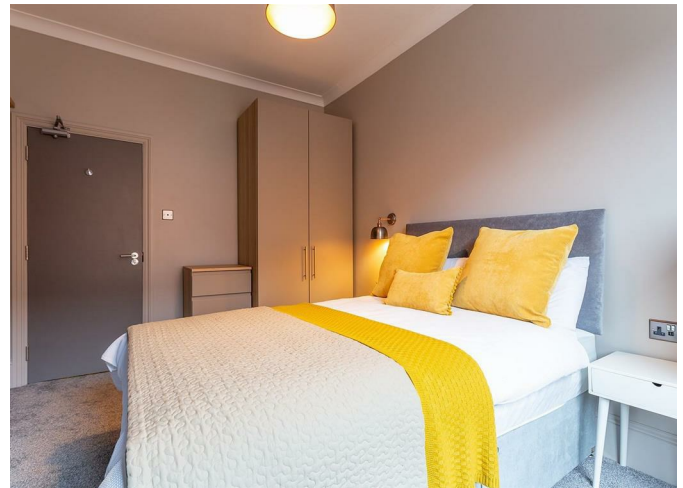
1



2



1





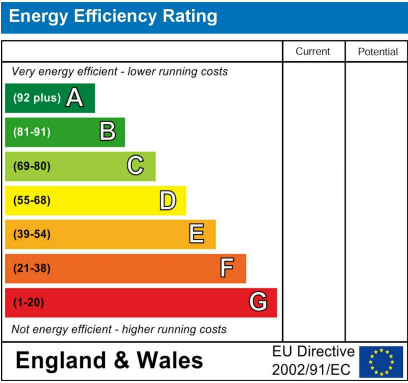
1

2

1







Agents Note: Whilst every care has been taken to prepare these particulars, they are for guidance purposes only. All measurements are approximate and are for general guidance purposes only and whilst every care has been taken to ensure their accuracy, they should not be relied upon and potential buyers/tenants are advised to recheck the measurements



OFFICE ADDRESS
8a Regent Street
Leamington Spa
Warwickshire
CV32 5HO

OFFICE DETAILS
01926 354 400
leamington@handlesproperty.co.uk