

PCM
£1,350 PCM
Warwick Terrace
Leamington Spa, CV32 5NT

PROPERTY SUMMARY

A spacious, two double bedroom, duplex apartment located a short walk from town.

Comprising open planned lounge/kitchen, with access to an enclosed rear garden, two double bedrooms upstairs and a shower room.

Furnished and available 8th September 2025

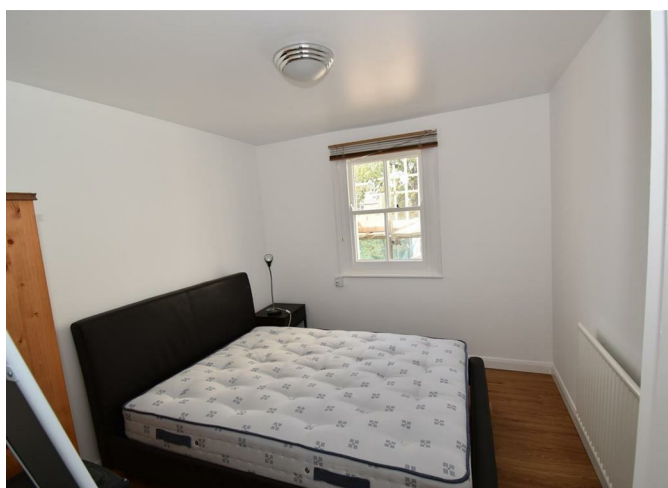
2



1



1



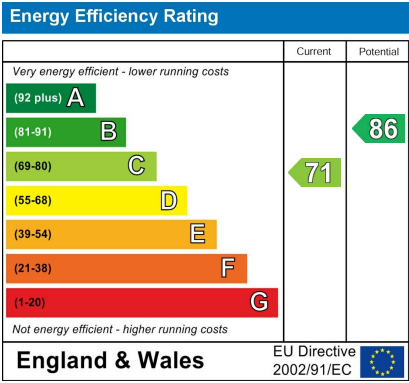




2
1
1







Agents Note: Whilst every care has been taken to prepare these particulars, they are for guidance purposes only. All measurements are approximate and are for general guidance purposes only and whilst every care has been taken to ensure their accuracy, they should not be relied upon and potential buyers/tenants are advised to recheck the measurements



OFFICE ADDRESS

8a Regent Street
Leamington Spa
Warwickshire
CV32 5HO

OFFICE DETAILS

01926 354 400
leamington@handlesproperty.co.uk