

£499,000
Crickley Fields
Brockworth, GL3 4PZ

PROPERTY SUMMARY

The Dursley is an impressive four-bedroom family home, offering a perfect blend of style, space, and sustainability. Located in Crickley Fields, this home enjoys stunning countryside surroundings while being close to excellent schools and transport links.

The generous open-plan kitchen and dining area is designed for modern family life, with a high-specification fitted kitchen featuring quartz worktops, integrated appliances, and soft-close cabinetry. A separate lounge provides a peaceful escape, while a utility room and downstairs WC add practicality.

4



2

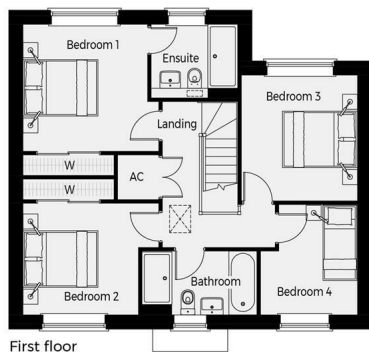


2



THE DURSLEY

4 bedroom home - plots 2, 10 & 32 (detached)



First floor

FIRST FLOOR

Bedroom 1
3623 x 3377mm (11'11" x 11'1")
Ensuite
2313 x 1959mm (7'7" x 6'5")
Bedroom 2
3079 x 2970mm (10'1" x 9'9")
Bedroom 3
3099 x 3347mm (10'2" x 11')
Bedroom 4
2588 x 2936mm (8'6" x 9'8")
Bathroom
3068 x 1700mm (10'1" x 5'7")

Total house size:
1409 sq.ft.
Plus two parking spaces
and a garage.

4



2



2



Energy Efficiency Rating

	Current	Potential
Very energy efficient - lower running costs		
(92 plus) A		
(81-91) B		
(69-80) C		
(55-68) D		
(39-54) E		
(21-38) F		
(1-20) G		
Not energy efficient - higher running costs		
England & Wales	EU Directive 2002/91/EC	

Agents Note: Whilst every care has been taken to prepare these particulars, they are for guidance purposes only. All measurements are approximate and are for general guidance purposes only and whilst every care has been taken to ensure their accuracy, they should not be relied upon and potential buyers/tenants are advised to recheck the measurements



OFFICE ADDRESS
8a Regent Street
Leamington Spa
Warwickshire
CV32 5HO

OFFICE DETAILS
01926 354 400
leamington@handlesproperty.co.uk