



PCM  
**£1,400 PCM**  
**Borrowell Terrace**  
Kenilworth, CV8 1ER

## PROPERTY SUMMARY

A beautifully finished, three double bedroom terraced house in sought after location in Kenilworth. Spacious and bright, the property comprises lounge/diner with feature fireplace, a kitchen/ diner, three double bedrooms upstairs, the master benefiting from built in wardrobes and a family bathroom. There are gardens to the front and the rear as well as a garage. Unfurnished and available 4th August 2025 .

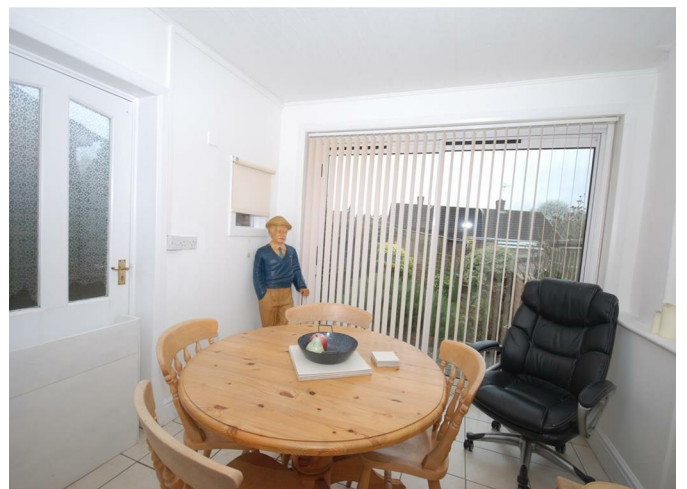
3



1



1







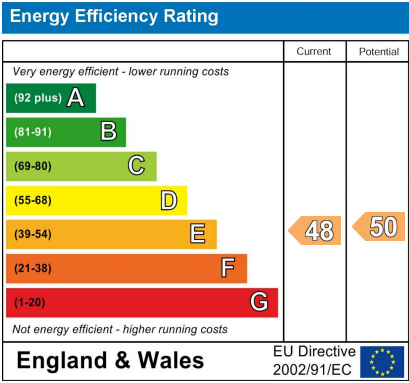
3

1

1







Agents Note: Whilst every care has been taken to prepare these particulars, they are for guidance purposes only. All measurements are approximate and are for general guidance purposes only and whilst every care has been taken to ensure their accuracy, they should not be relied upon and potential buyers/tenants are advised to recheck the measurements



OFFICE ADDRESS  
8a Regent Street  
Leamington Spa  
Warwickshire  
CV32 5HO

OFFICE DETAILS  
01926 354 400  
leamington@handlesproperty.co.uk