

OFFERS IN EXCESS OF
£324,500
The Furr Marsh
Warwick, CV34 6DL

PROPERTY SUMMARY

A beautifully presented modern three-bedroom end-of-terrace home that delights from the moment you step inside. Nestled in a quiet, tucked-away spot close to Chase Meadow Park, this charming property is perfectly suited to both families and couples.

With a generous floor area of 822 sq. ft, the home offers a spacious living room, a fitted dining kitchen, three well-proportioned bedrooms (including an en-suite to the master), a stylish family bathroom, and a convenient downstairs guest W.C – all filled with natural light.

The rear garden is as appealing as the home itself: a peaceful retreat ideal for relaxation, summer entertaining, or alfresco dining. Completing the picture is a garage equipped with an EV charging point, providing future-proof practicality as well as useful storage for bikes and more.

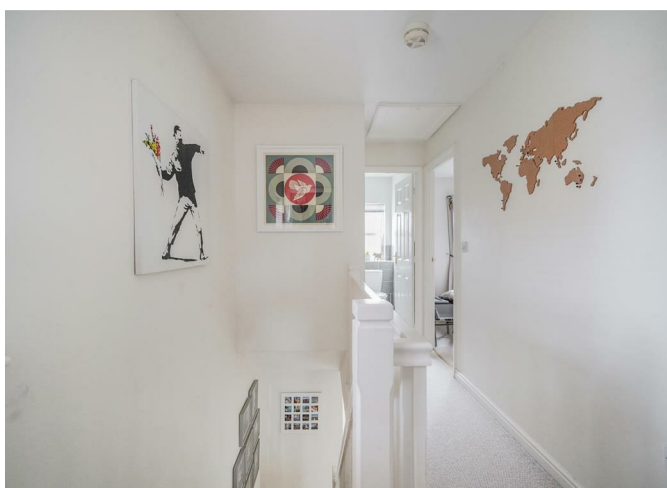
3



2



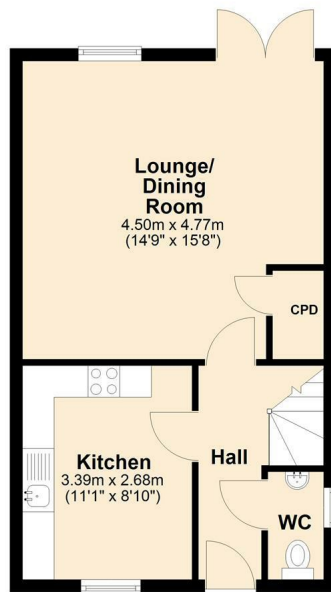
1



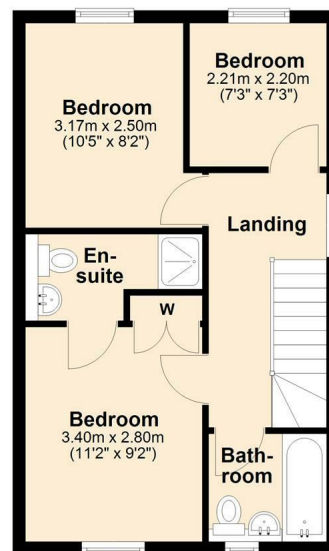




Ground Floor



First Floor



Total area: approx. 76.4 sq. metres (822.4 sq. feet)



Energy Efficiency Rating		
	Current	Potential
Very energy efficient - lower running costs		
(92 plus) A		
(81-91) B		
(69-80) C		
(55-68) D		
(39-54) E		
(21-38) F		
(1-20) G		
Not energy efficient - higher running costs		
England & Wales	EU Directive 2002/91/EC	

Agents Note: Whilst every care has been taken to prepare these particulars, they are for guidance purposes only. All measurements are approximate and are for general guidance purposes only and whilst every care has been taken to ensure their accuracy, they should not be relied upon and potential buyers/tenants are advised to recheck the measurements



OFFICE ADDRESS
8a Regent Street
Leamington Spa
Warwickshire
CV32 5HO

OFFICE DETAILS
01926 354 400
leamington@handlesproperty.co.uk