

PCM

£1,295 PCM

Norfolk Street

Leamington Spa, CV32 5YQ

## PROPERTY SUMMARY

A beautifully finished, two double bedroom terraced house a short walk to the town centre. Comprising open planned Lounge/diner with feature fireplace, modern fitted kitchen with appliances, two double bedrooms and a large family bathroom. An enclosed rear, courtyard garden is accessed through the kitchen. Unfurnished and available late August.

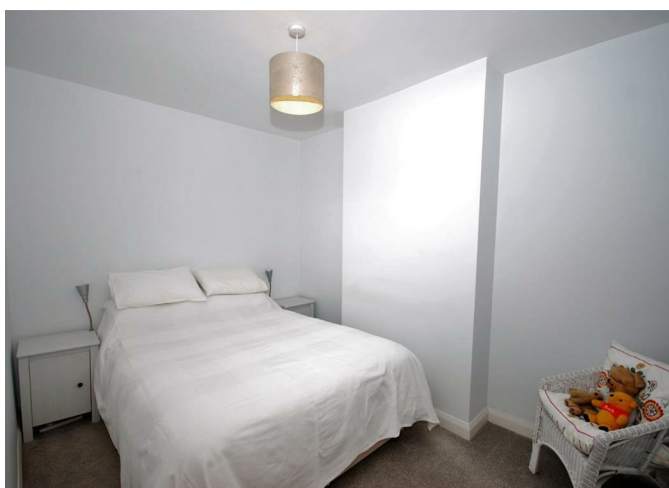
2



1



1





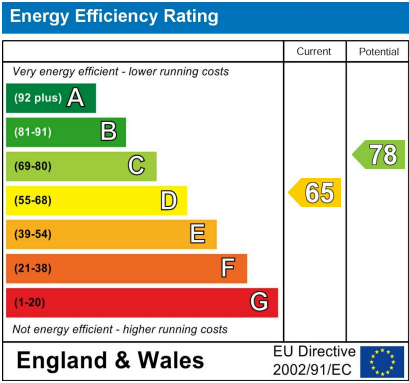
2

1

1







Agents Note: Whilst every care has been taken to prepare these particulars, they are for guidance purposes only. All measurements are approximate and are for general guidance purposes only and whilst every care has been taken to ensure their accuracy, they should not be relied upon and potential buyers/tenants are advised to recheck the measurements



OFFICE ADDRESS  
8a Regent Street  
Leamington Spa  
Warwickshire  
CV32 5HO

OFFICE DETAILS  
01926 354 400  
leamington@handlesproperty.co.uk