

PCM  
**£950 PCM**  
**St. Marys Road**  
Leamington Spa, CV31 1JW



## PROPERTY SUMMARY

Discover this beautifully presented ground floor apartment, perfectly situated in one of Leamington Spa's most sought-after locations. Set back from the road, this property offers a wonderful sense of peace and privacy, while still being just a short walk from the Town Centre and train station – ideal for professionals and commuters alike.

Step inside to find a spacious open-plan lounge and kitchen, thoughtfully designed for modern living. The double bedroom is generously sized, and the stylish shower room has been finished to a high standard.

Recently modernised throughout, the apartment boasts contemporary décor, quality furnishings, and a light, welcoming feel.

Available early November and offered Furnished.

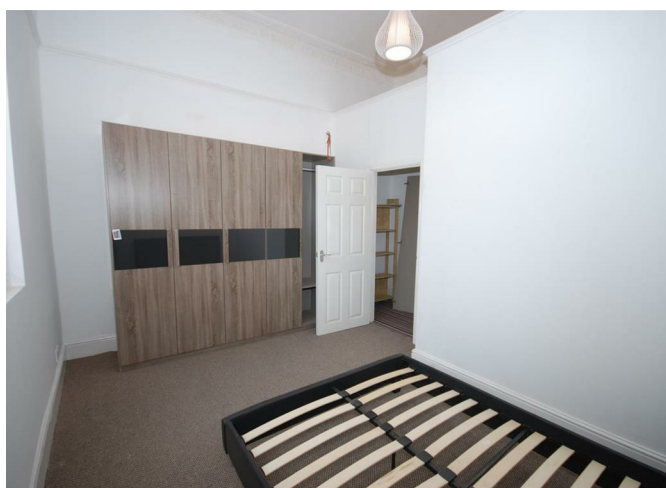
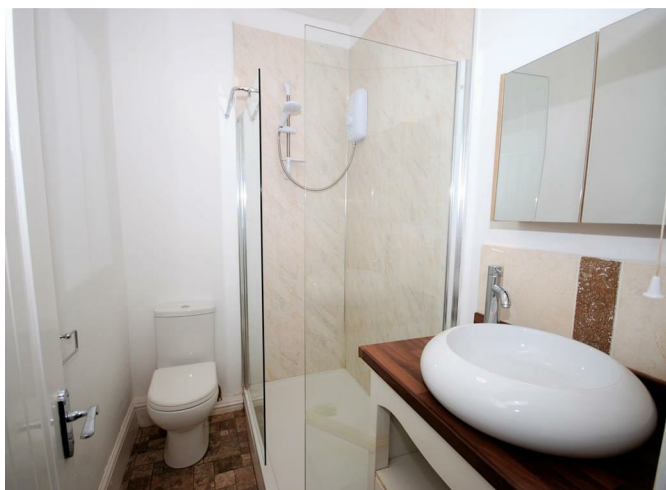
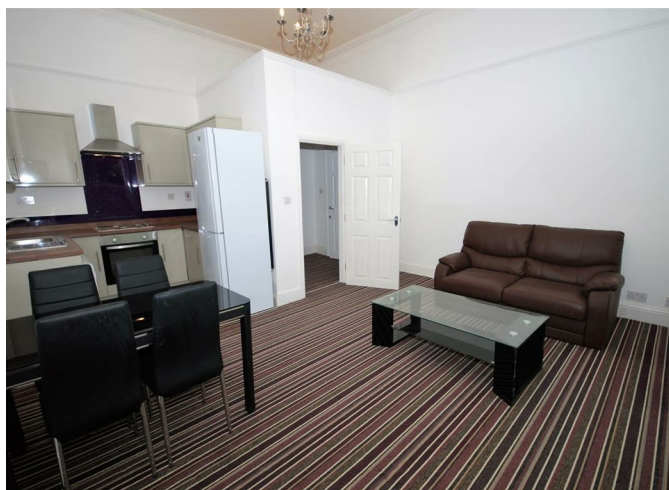
1



1



1





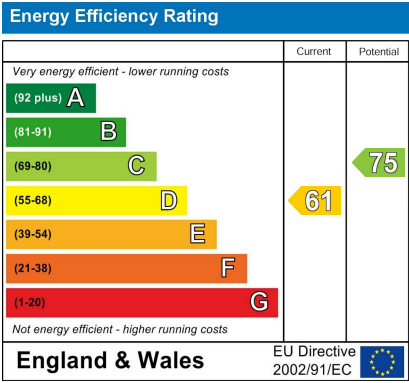
1

1

1







Agents Note: Whilst every care has been taken to prepare these particulars, they are for guidance purposes only. All measurements are approximate and are for general guidance purposes only and whilst every care has been taken to ensure their accuracy, they should not be relied upon and potential buyers/tenants are advised to recheck the measurements



OFFICE ADDRESS

8a Regent Street  
 Leamington Spa  
 Warwickshire  
 CV32 5HO

OFFICE DETAILS

01926 354 400  
 leamington@handlesproperty.co.uk