

PCM
£1,695 PCM
Kingfisher Close
Warwick, CV34 5GD

PROPERTY SUMMARY

A Beautifully presented, first floor apartment to rent in a popular modern, Riverside development, a short walk from the town centre. The apartment overlooks the River Avon and benefits from Secure allocated parking and a large outdoor terrace. The spacious apartment comprises an open planned living room & Fitted Kitchen, two double bedrooms, the master having an Ensuite Shower room, and there is a separate bathroom. Secure entry system to the block and communal lift. Offered Furnished and Available from 25th November.

2



2



1

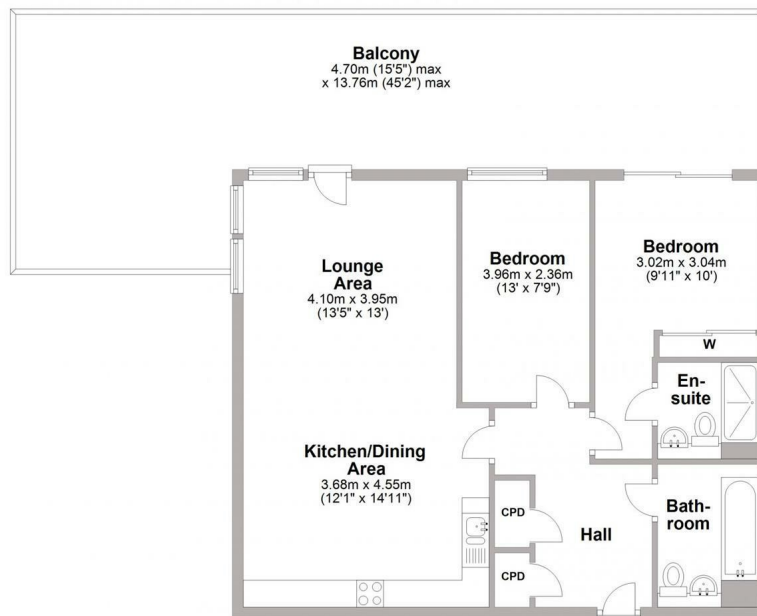






First Floor

Approx. 75.5 sq. metres (812.2 sq. feet)



Total area: approx. 75.5 sq. metres (812.2 sq. feet)



Energy Efficiency Rating		
	Current	Potential
Very energy efficient - lower running costs		
(92 plus) A		
(81-91) B		
(69-80) C		
(55-68) D		
(39-54) E		
(21-38) F		
(1-20) G		
Not energy efficient - higher running costs		
England & Wales EU Directive 2002/91/EC		

Agents Note: Whilst every care has been taken to prepare these particulars, they are for guidance purposes only. All measurements are approximate and are for general guidance purposes only and whilst every care has been taken to ensure their accuracy, they should not be relied upon and potential buyers/tenants are advised to recheck the measurements



OFFICE ADDRESS
8a Regent Street
Leamington Spa
Warwickshire
CV32 5HO

OFFICE DETAILS
01926 354 400
leamington@handlesproperty.co.uk