

PCM
£3,750 PCM
The Fairways
Leamington Spa, CV32 6PU

PROPERTY SUMMARY

An outstanding detached five bedroom extended property In a popular residential area of North Leamington. Downstairs the property comprises a large entrance hallway, large open plan kitchen/ dining and living area, a second living room , downstairs shower room and further room that could be used study, games room or even a gym. Upstairs are five double bedrooms, two with ensuites along with an additional large family bathroom. The property also benefits from a large rear garden, garage and driveway for several cars. Unfurnished and Available 19th August 2025

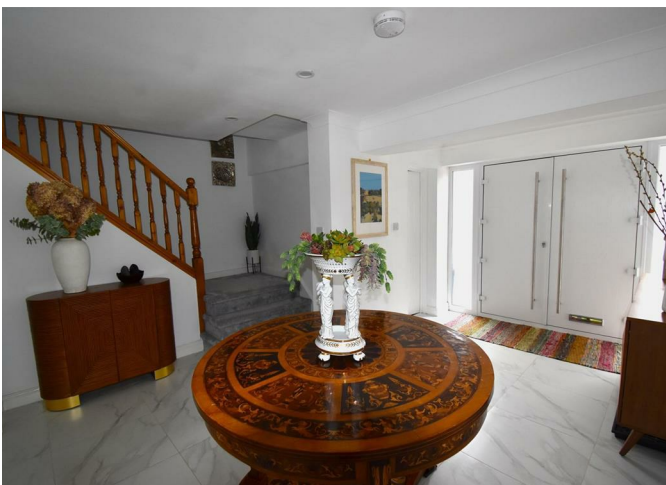
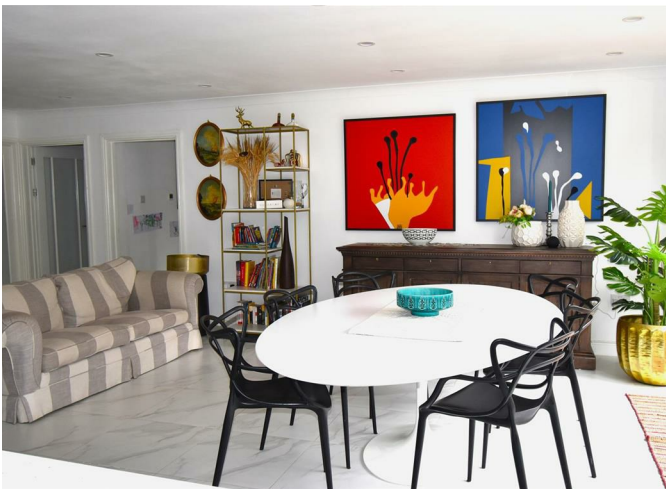
5



4



2



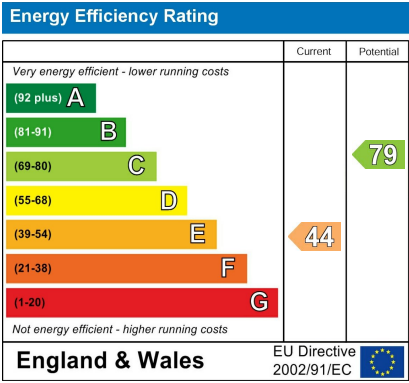




5

4

2



Agents Note: Whilst every care has been taken to prepare these particulars, they are for guidance purposes only. All measurements are approximate and are for general guidance purposes only and whilst every care has been taken to ensure their accuracy, they should not be relied upon and potential buyers/tenants are advised to recheck the measurements

OFFICE ADDRESS
 8a Regent Street
 Leamington Spa
 Warwickshire
 CV32 5HO

OFFICE DETAILS
 01926 354 400
leamington@handlesproperty.co.uk