



PCM
£895 PCM
53 Tachbrook Street
Leamington Spa, CV31 3BW

PROPERTY SUMMARY

A spacious and ideally situated one double bedroom, garden apartment located close to Leamington Spa town centre and train station. Comprising, entrance hallway, open planned lounge/kitchen with appliance, large double bedroom and a bathroom. Furnished and Available NOW

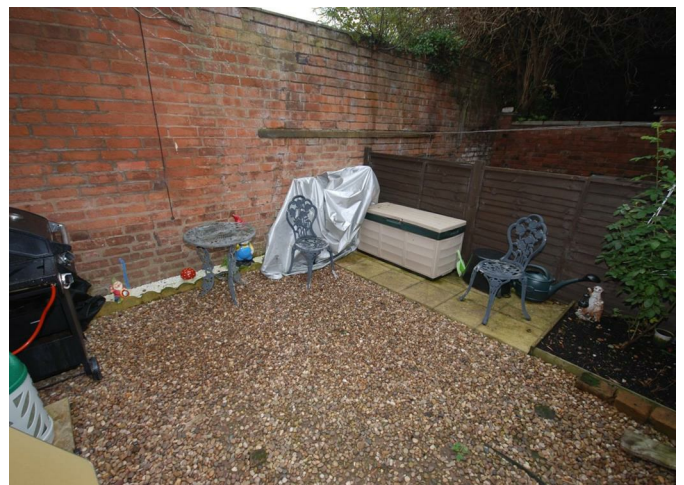
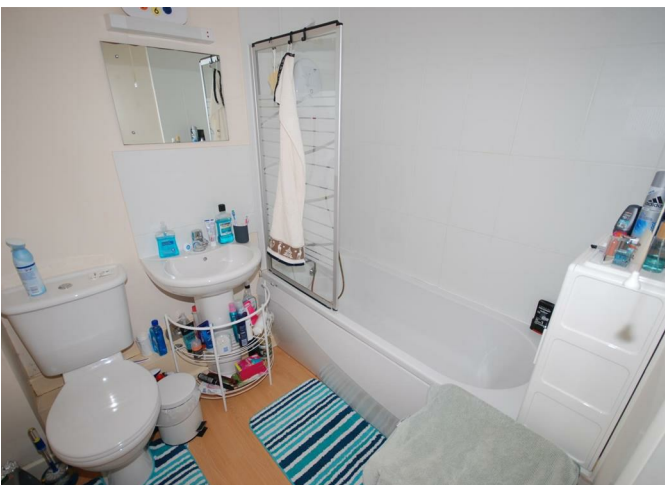
1

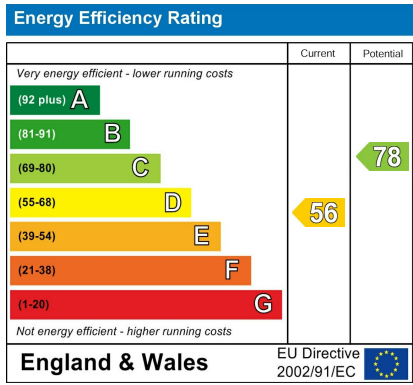


1



1





Agents Note: Whilst every care has been taken to prepare these particulars, they are for guidance purposes only. All measurements are approximate and are for general guidance purposes only and whilst every care has been taken to ensure their accuracy, they should not be relied upon and potential buyers/tenants are advised to recheck the measurements



OFFICE ADDRESS
 8a Regent Street
 Leamington Spa
 Warwickshire
 CV32 5HO

OFFICE DETAILS
 01926 354 400
 leamington@handlesproperty.co.uk