

PRICE GUIDE

£335,000

Northumberland Court

Leamington Spa, CV32 6HW

PROPERTY SUMMARY

An Enormous Mid-Century Duplex in a Prime Location

Set proudly at the prestigious intersection of Northumberland and Kenilworth Road, this striking mid-century duplex apartment spans over 1,400 square feet of stylish, versatile living space. Offered with no onward chain, this is a rare opportunity to secure a truly standout property with minimal hassle.

From the moment you step inside, the apartment impresses. Gorgeous timber flooring leads you through a generous living area that balances character and comfort with ease. The modern kitchen and adjoining utility room are sleek and well-equipped, featuring high-quality built-in appliances and contemporary cabinetry that make everyday living a joy.

4



2



1





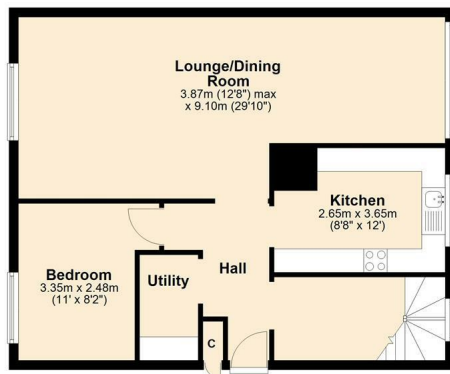

HANDLES
PROPERTY



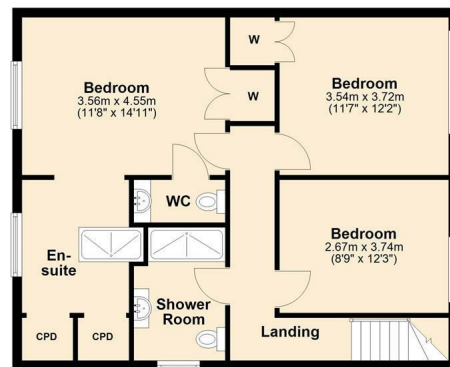

HANDLES
PROPERTY



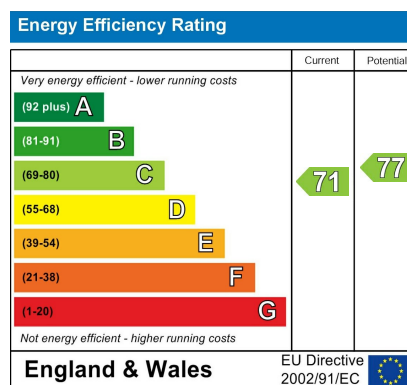
Second Floor



Third Floor



Total area: approx. 133.2 sq. metres (1433.4 sq. feet)



Agents Note: Whilst every care has been taken to prepare these particulars, they are for guidance purposes only. All measurements are approximate and are for general guidance purposes only and whilst every care has been taken to ensure their accuracy, they should not be relied upon and potential buyers/tenants are advised to recheck the measurements



OFFICE ADDRESS
8a Regent Street
Leamington Spa
Warwickshire
CV32 5HO

OFFICE DETAILS
01926 354 400
leamington@handlesproperty.co.uk