

PCM
£2,200 PCM
9 Dormer Place
Leamington Spa, CV32 5AA

PROPERTY SUMMARY

Handles Property are delighted to offer this, immaculate, executive apartment in the heart of Leamington Spa. With stunning views over the Band Stand/Pump Room Gardens.

This fantastic duplex apartment combines modern fixtures and fittings with elegant original features.

Comprising entrance hallway, an impressive kitchen with island, opening to a lounge diner, there is also a great size double bedroom with study area and large ensuite

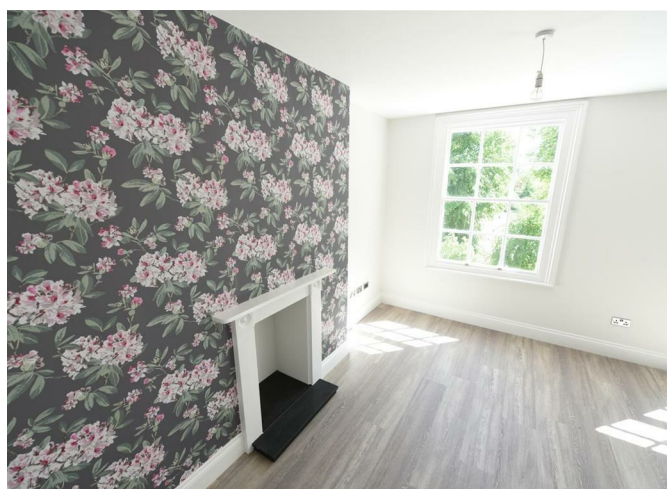
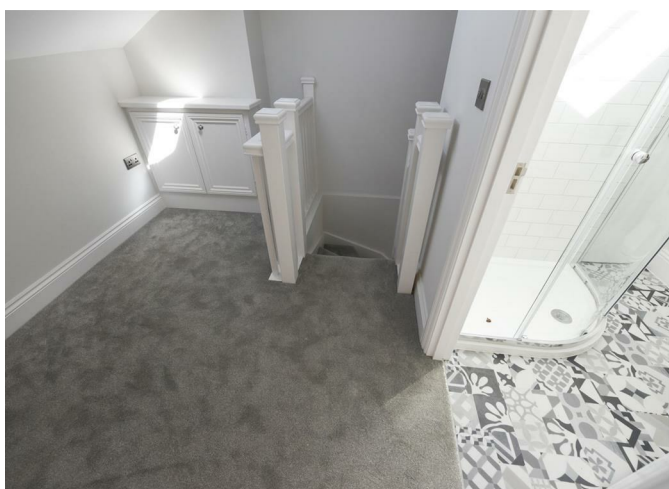
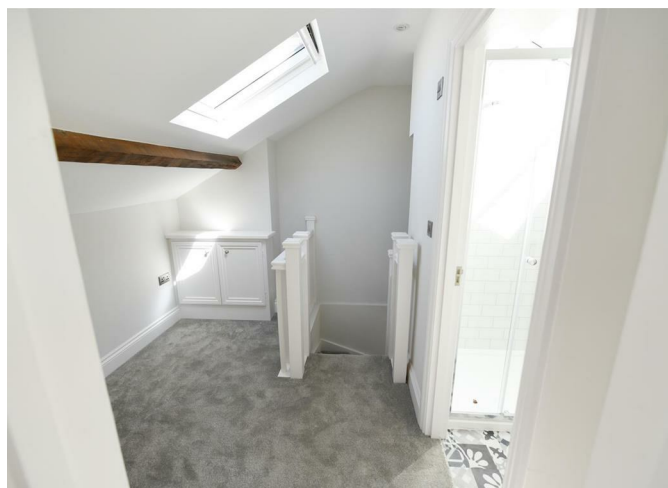
2



2



1



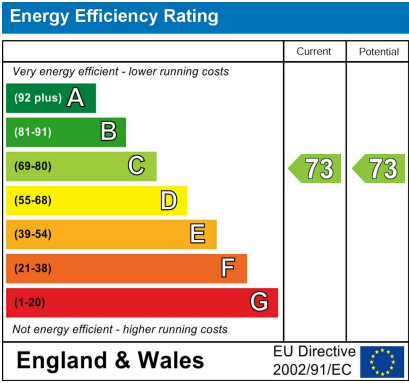




2

2

1



Agents Note: Whilst every care has been taken to prepare these particulars, they are for guidance purposes only. All measurements are approximate and are for general guidance purposes only and whilst every care has been taken to ensure their accuracy, they should not be relied upon and potential buyers/tenants are advised to recheck the measurements

OFFICE ADDRESS
 8a Regent Street
 Leamington Spa
 Warwickshire
 CV32 5HO

OFFICE DETAILS
 01926 354 400
leamington@handlesproperty.co.uk