



PRICE GUIDE

£265,000

Russell Terrace

Leamington Spa, CV31 1FU

PROPERTY SUMMARY

No Onward Chain – Spacious and Modern Apartment in Leamington Spa

This superb two-bedroom, third-floor apartment offers an impressive 100m² of top floor accommodation. Perfect for those seeking modern living with generous space, it's a fantastic opportunity for small families, professionals, or anyone looking to enjoy the vibrant lifestyle of Leamington Spa.

Located in the sought-after Squirhill Place, at the quiet end of the picturesque Russell Terrace, this property enjoys a prime position. The broad, tree-lined street lies on the central eastern side of Leamington Spa town centre, providing convenient access to the lively

2



2

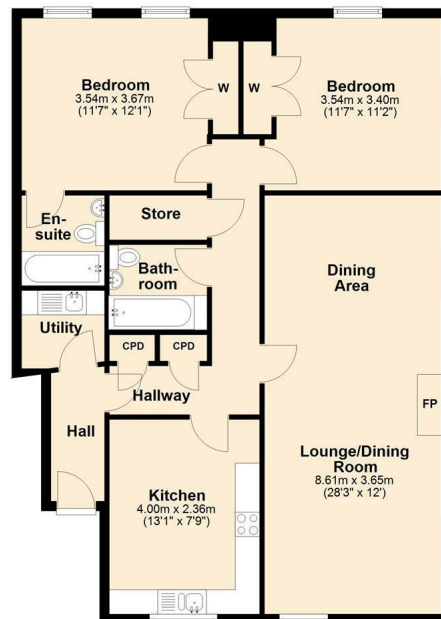


1

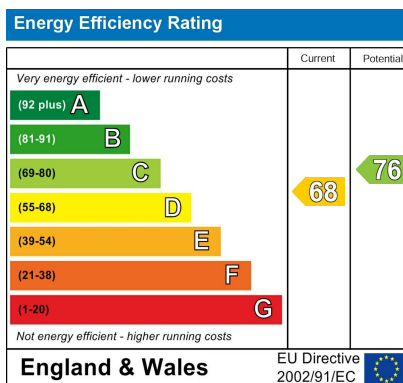




Third Floor



Total area: approx. 100.0 sq. metres (1076.3 sq. feet)



Agents Note: Whilst every care has been taken to prepare these particulars, they are for guidance purposes only. All measurements are approximate and are for general guidance purposes only and whilst every care has been taken to ensure their accuracy, they should not be relied upon and potential buyers/tenants are advised to recheck the measurements



OFFICE ADDRESS
8a Regent Street
Leamington Spa
Warwickshire
CV32 5HO

OFFICE DETAILS
01926 354 400
leamington@handlesproperty.co.uk